



TABLE TENNIS ENGLAND INFORMATION PACK

COMMITTEE VOLUNTEER

Finance & Audit Committee

People Committee



MAY 2026

 tabletennisengland.co.uk

WELCOME

Thank you for your interest in becoming a Volunteer Committee Member at Table Tennis England.



Table tennis is going from strength to strength with more than 450,000 people playing regularly in England; this happens because of extraordinary people in our team and across the wider table tennis community.

Our strategy, Table Tennis United, sets out an exciting journey of growth and transformation that underpins our purpose to 'host generations of players at our table', and towards our vision of 'a table tennis nation'.

Our Board and Senior Leadership Team have developed a governance structure to help us deliver our strategic plan with a number of committees and working groups dedicated to key areas such as Finance & Audit, People, Governance, Development, Performance and Competitions. The most successful Committees are widely accepted to be those which draw on a range of viewpoints and skills to support delivery of the Committee's terms of reference.

We now seek expressions of interest from individuals with appropriate skills, who can

contribute to the delivery of our committees' responsibilities and which foster an inclusive culture where all voices are heard and valued, and difference of opinion is respected.

Table tennis is all about people and if we are to achieve our ambitions, we must ensure we are relevant and connected to our membership, to the wider playing community and to those partners and stakeholders who can help us 'go faster'.

This is a sport doing something incredibly exciting – so if you have the skills and experience, we need to achieve our vision, we'd love to hear from you.

Clare Briegal

Clare Briegal MBE
Chair

ABOUT US



CULTURE & VALUES

Play to Win, Everyone's Game, Rally Together

WHO WE ARE

We are the National Governing Body for table tennis in England with a team of 40 staff; we are also appointed by Great Britain Table Tennis to lead the operational delivery of the GB Performance Programme which is solely focused on preparing athletes to represent Great Britain at the Olympic Games.

OUR PURPOSE

To host generations of players at our table.

OUR VISION

To be a table tennis nation, competition for all.

OUR STRATEGY

[Table Tennis United](#) is the blueprint for table tennis in England and sets out our bold ambitions through four Pledges:

- 1. Table tennis will be a thriving community - a sport for everyone with no barriers to taking part**
 - a. Working in partnership
 - b. Growing a grass roots workforce
 - c. Participation with a purpose
 - d. Competition for all
- 2. Culture change across the pathway that inspires world class performances and medal success**
 - a. World class pathway
 - b. World class behaviours
 - c. World class environments
- 3. Connection across the table tennis community**
 - a. Building our digital capability
 - b. Staging fantastic events
 - c. Developing our partners
- 4. A high performing organisation that is not just fit for today but is fit for the future**
 - a. A powerful culture
 - b. Tackling inequalities
 - c. Investing in people
 - d. Influencing our partners
 - e. Inspiring change
 - f. Growing our owned income

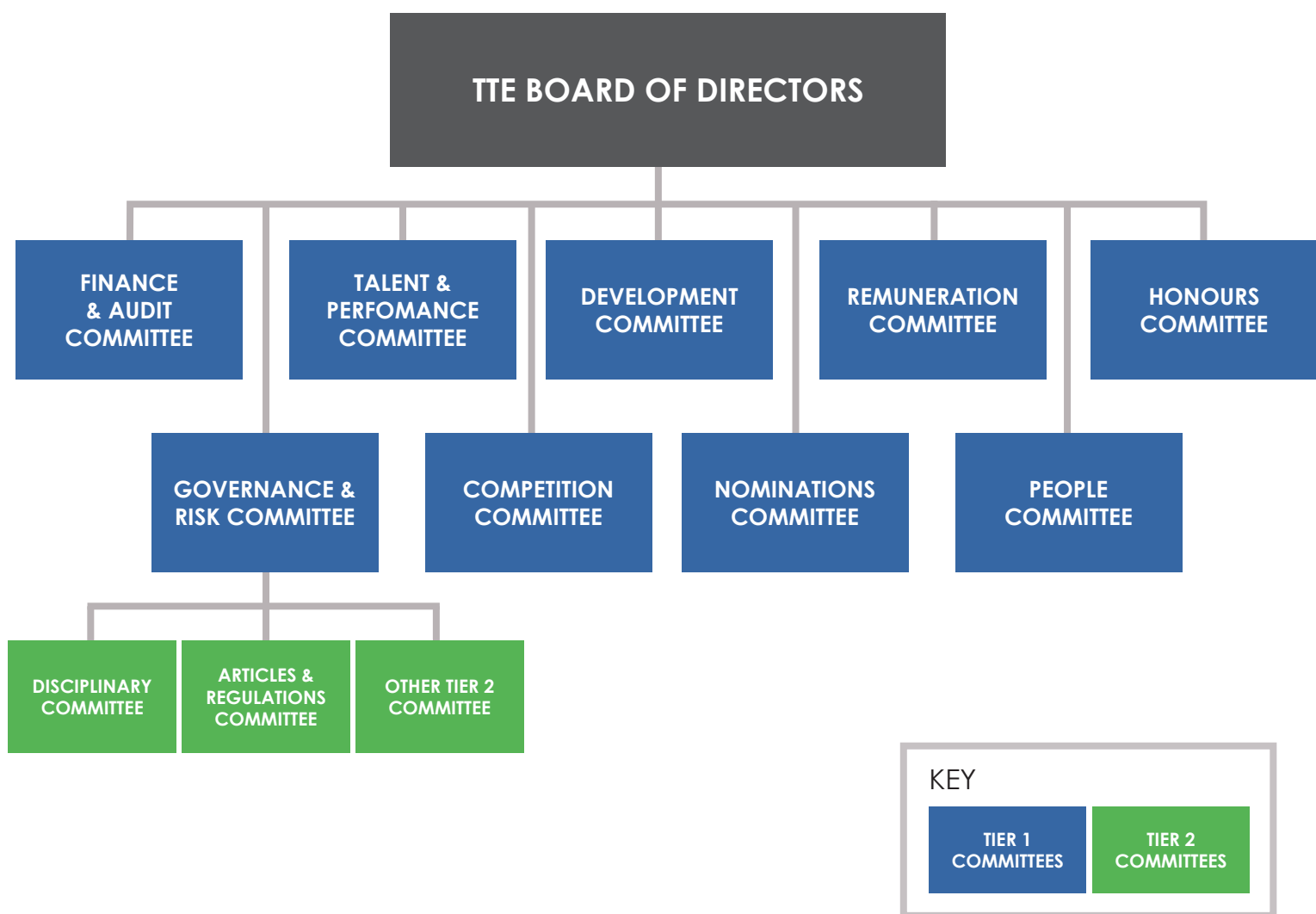
In line with our Level the Table strategy, Table Tennis England is committed to becoming a more diverse and inclusive organisation to bring new and different perspectives to our work. So that we can more closely reflect UK society, we particularly encourage applications from individuals within groups which are currently underrepresented, namely candidates who identify with different gender attributes, from an ethnically diverse background and/or individuals with a disability or long-term health condition, and/or those at any stage of their career.

Should you require assistance with the application process, please contact HR and we will make every effort to meet your specific requirements. Table Tennis England operates under the Disability Confident Scheme.



GOVERNANCE STRUCTURE

Tier 1 Committees and Tier 2 Committees with vacancies



THE OPPORTUNITY

COMMITTEE SPECIFIC SKILLS, EXPERIENCE & KNOWLEDGE

FINANCE & AUDIT COMMITTEE



Key Skills & Expertise

Financial Management	<ul style="list-style-type: none">• Ability to review management accounts and statutory accounts• Experience in preparing financial commentaries and evaluating financial performance
Strategic Financial Planning	<ul style="list-style-type: none">• Skills in developing and reviewing long-range financial plans• Ability to assess and recommend annual budgets and reforecasts
Audit & Assurance	<ul style="list-style-type: none">• Understanding of external audit processes and management letters• Ability to evaluate internal controls and ensure audit recommendations are addressed
Risk & Investment Oversight	<ul style="list-style-type: none">• Capacity to identify and report strategic financial or investment risks• Experience in reviewing banking arrangements and reserves policies
Governance & Compliance	<ul style="list-style-type: none">• Familiarity with the Code for Sports Governance.• Ability to ensure committee activities align with governance standards
IT & Internal Controls	<ul style="list-style-type: none">• Understanding of IT systems relevant to financial oversight• Ability to assess and report on internal control frameworks

THE OPPORTUNITY

COMMITTEE SPECIFIC SKILLS, EXPERIENCE & KNOWLEDGE

PEOPLE COMMITTEE



Key Skills & Expertise

Human Resources & People Management	<ul style="list-style-type: none">• Understanding of HR policies and practices• Experience in recruitment, retention, performance management, and employee relations
Equality, Diversity & Inclusion (EDI)	<ul style="list-style-type: none">• Knowledge of EDI principles• Ability to support and implement the EDI Action Plan
Wellbeing & Safeguarding	<ul style="list-style-type: none">• Awareness of mental health and wellbeing strategies• Understanding of safeguarding responsibilities
Talent & Development	<ul style="list-style-type: none">• Experience in talent identification and development pathways• Ability to contribute to training plans and development strategies
Strategic Thinking	<ul style="list-style-type: none">• Ability to align people-related decisions with organisational strategy• Capacity to advise on long-term workforce planning and organisational culture

PERSON SPECIFICATION

YOU MUST:

- be able to commit to Table Tennis England and dedicate the required time
- have strategic vision and independent judgement
- be an inclusive leader, with a clear commitment to improving diversity and equality and understanding of the needs of under-represented groups within our sport
- be able to challenge constructively within a Committee environment and influence stakeholders at all levels
- be able to demonstrate the values and behaviours of Table Tennis England





TIME AND COMMITMENT

We are heavily reliant on volunteers across our organisation and are thankful for their important contribution to Table Tennis England's work. Table Tennis England will pay expenses in line with the organisation's expenses policy. Details of time and commitment are as follows:

- All volunteer committee roles are **voluntary**
- Committee meetings are held once a quarter via an online meeting, in very exceptional circumstances they will be held at the Head Office in Milton Keynes
- Advisory and Standing Committees are held online approximately twice a year or as needed for the Disciplinary Committee and Articles & Regulations Committee

HOW TO APPLY

APPLICATION PROCESS

If you would like to be a part of one of our committees and the exciting work ahead, please submit the following:

1. A cover letter advising which Committee you would like to be considered for and how you meet the requirements of the key skills and expertise, and why it appeals to you.
2. An up-to-date CV which details your skills and experience, including any key achievements.

Please email your application to: hr@tabletennisengland.co.uk
by **5pm on Tuesday 30 June 2026**.

If your application is successful, you will be contacted to take part in the interview stage due to be held throughout July.



The logo consists of a semi-circle of thin, parallel lines that curve inward, creating a stylized 'T' shape. The lines are light blue and set against a dark blue background.

Table Tennis England



tabletennisengland.co.uk

Head Office:
Table Tennis England
Bradwell Road
Loughton Lodge
Milton Keynes
MK8 9LA

Tel: 01908 208860

Email: help@tabletennisengland.co.uk

