

## THE MERSEYSIDE OPEN TOURNAMENT

The first Merseyside Open Tournament was held in 1929, and was the first 'Open' tournament to be held in Lancashire. It attracted 205 entrants in its first year with several internationals in the line up and the Mens Singles title was won by Stan Proffit of Manchester.

The tournament was held over three days with the preliminaries on Thursday and Friday, the finals on Saturday night at Picton Hall. Admission was one shilling and a programme cost 2d. In his programme foreword the Chairman of the Liverpool league described it as the greatest table tennis contest ever held in Liverpool. Also contained in the programme was an advert from Jack Sharp offering table tennis tables for sale, from 57/- to £7 6s 0d.

The Ladies Doubles were introduced to the tournament in 1931/32 when Miss Annie Pollitt and Miss J. Bartholomew (both Liverpool) were the victors and the following year saw another home victory for Mrs A. Bartholomew and Miss J. Bartholomew.

1932 also saw the tournament's greatest personality, G.V. Barna, make his first visit to the 'Merseyside' and he brought with him French international, M. Haguener. Together they won the Men's Doubles and Barna dominated the whole tournament also capturing the first of his Men's Singles titles. Mrs Scott-Hall of Manchester took the Women's Singles title away from Liverpool, becoming the first winner of the 'Mac' Challenge Cup.

1934/35 was another important landmark, for the Junior singles were introduced and resulted in another 'home' winner, L. 'Sonny' Berman, who became the first recipient of the W.S. Romain Cup. The entries reached a record 342 but more importantly still, the Men's Singles was won by a Liverpool player, when Ken Hyde defeated A.D. Brook in the final, after what was described as a 'wonderful battle'.

In the programme the organisers were claiming it to be the premier tournament in the provinces.

So prominent and profitable was the 'Merseyside' that the programmes were ambitious affairs. In 1935, for example,

it was a magazine type with 26 pages and included details of previous winners, most of the draw and a plan of the seating and tables. Barna balls were advertised at 4 shillings per dozen.

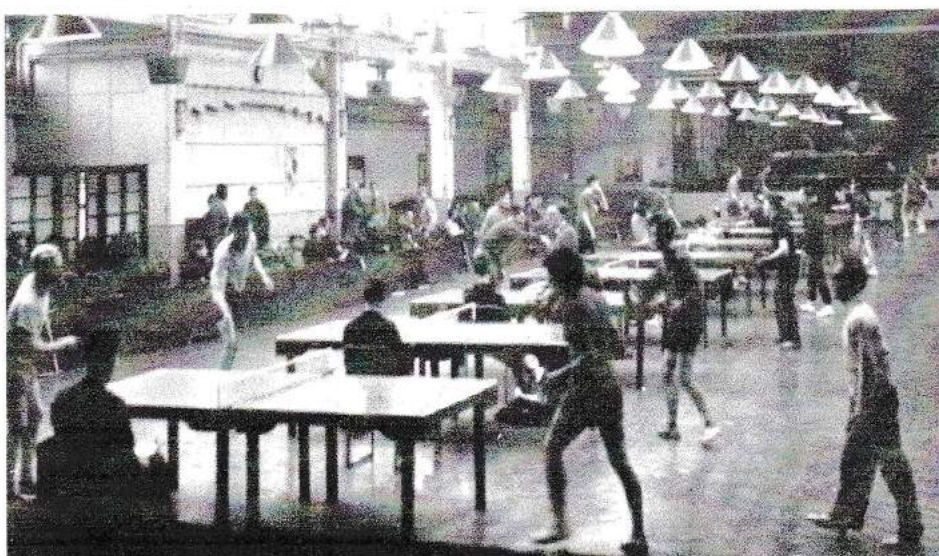
The Merseyside Open was one of the major events in the country and a must for the top players.

In 1946, the League was celebrating 21 years and the 'Merseyside' took a special place in its celebrations. The event was spread over five days with the preliminaries at the Gordon Institute and the finals on the Saturday at a packed Liverpool Stadium. Victor Barna again won the Men's Singles, defeating reigning champion, Johny Leach by 3 games

to 2, after a great comeback, from being 2 games down.

Another world champion, the great Richard Bergman, was a regular visitor to Merseyside and he took the Men's title for the first time in 1947.

In 1951, the 'Open' was still advertised as the largest tournament outside London, the finals now being played at the Philharmonic Hall. Victor Barna, Johny Leach, Jack Carrington, Geoff Harrower and the famous Rowe twins, Ladies doubles World Champions, amongst the host of top players competing.



Dunlops, scene of the 1957 Merseyside Open



WOT! NO TEA. Volunteers have always been the backbone of any venture and ladies such as these proved invaluable in providing refreshments at the 'Open'.



The 'Open' was a regular fixture in the E.T.T.A. calendar but as the sport lost popularity in the late 1970's and 1980's it suffered due to lack of sponsorship, being last staged in the 'old' format in 1983 at Kirkby Sports Centre.

In 1997, with the support of the E.T.T.A. and the Liverpool City Council Leisure Services Directorate, the Merseyside Open was resurrected as part of the E.T.T.A. Grand Prix Tour. Over 240 competitors from all parts of the United Kingdom and beyond, flocked to the Wavertree Tennis Centre and treated those present to a feast of international table tennis.

The highlight of the 1998 'Open' was the performance of Liverpool League

players, Adam Robertson, Kevin Dolder, Claire Newns and Delyth Davies.

Adam and Kevin met each other in the Men's Under 21 final, Adam securing a victory, but it was in the Men's Event that both players sparkled. Kevin had his best ever victory, beating the previous year's finalist and top ten England ranked, Darren Blake, in a breath taking quarter final, before losing out to Mark Smith in a very tight semi. Adam also excelled to reach the semi finals where he put up a good fight against number one seed and eventual winner, English international Bradley Billington.

Claire Newns and Delyth Davies brought more prestige to the city with a surprising but well deserved victory in the Ladies

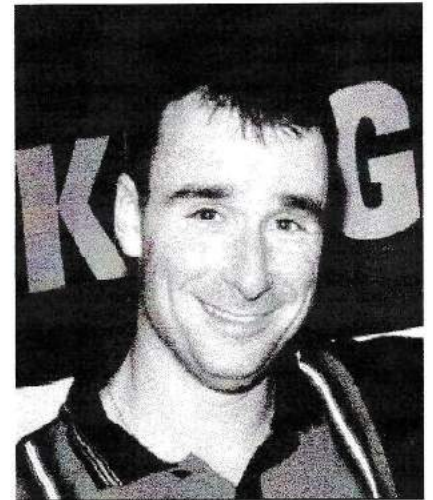
Doubles final.

The 'Open' was back as an annual event and in 2001 the E.T.T.A. classed it as a 'major'.

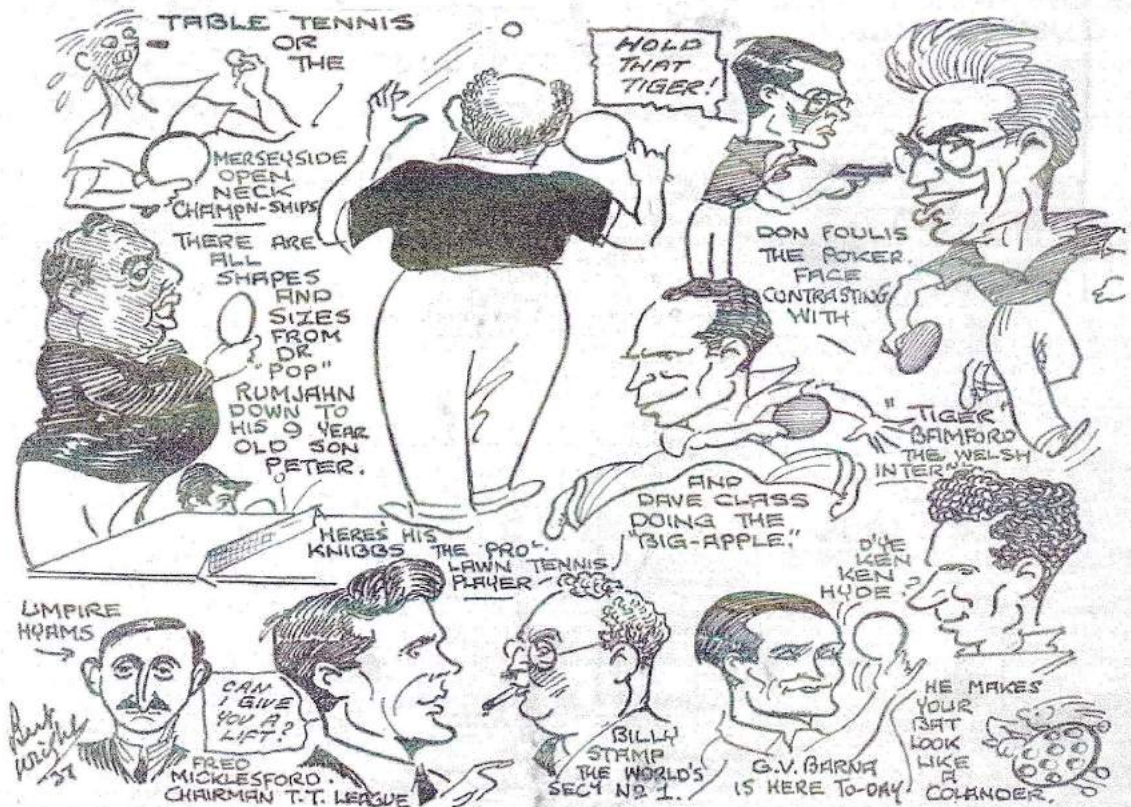
The Liverpool league has made much progress in the last ten years, so much so that the League has now taken over the entire organisation and running of the tournament.



Adam Robertson and Kevin Dolder, pictured at the Merseyside Open Tournament, 1998.



Bradley Billington, winner of the Men's Singles at the Merseyside Open, 1998. Bradley was following in his father's footsteps as back in the 1960's, his father, Maurice won the Junior Boys' Singles title, paving the way for England International, Bradley to fly the flag for the Billington family.



This cartoon portraying the Merseyside Open, 1937, appeared in the Liverpool Evening Express



THE MERSEYSIDE OPEN CHAMPIONSHIPS, LIVERPOOL, NOVEMBER 26TH, 1938



The scene following the presentation of the prizes by Mr. H. Oldroyd, President of the English Table Tennis Association. Line up of the successful competitors :-

Miss G. Mace, Mrs. L. Harding, Mrs. D. Stead, R. Bergman, Ken Hyde, Mrs N. Norrish, Miss E. Malley, Miss L.R. Barnes and L. Baron. Standing to the left of 'Pinkie' Barnes is Mr. C.E. Bartholomew, President of the Liverpool League and on the extreme left is Mr. W. Stamp, Hon. Sec. of the Liverpool League. Benny Casofsky has his hands on Ronnie Rumjahn's shoulders, with Freddie Cromwell on his left.



## STARS WHO HAVE GRACED THE MERSEYSIDE OPEN



An England International, **Stanley Proffitt** of Manchester won the very first Merseyside Open Men's Singles title in 1929.



**Vera Dace** (nee Thomas) was English Open Champion in 1939/40. A member of the England team that won the Corbillion Cup in 1946/47 and 1947/48, Vera also won a World Doubles title in 1948 and was runner up in the Womens World Championships the same year.



The great **Gyozo Victor Barna**, World Champion and English Open Champion on five occasions. Seven times Men's World Doubles Champion and winner of the 'Merseyside' in 1935 and 1937.



**Helen Elliot** (Scotland), four times winner of the Ladies title at the Merseyside, along with several Doubles titles.



**Laslo Bellak**, the greatest player never to have won a world title, did however take the Men's Doubles title in the English Open on two occasions, 1937 and 38, with partner, Barna.



**Margaret Osborne**, Women's English Open Champion in 1933/34 and 1934/35, also won the Ladies Doubles three times and with Victor Barna won the Mixed title, on four occasions.



**Michael Sabados** (Hungary), World Champion in 1930/31, English Open Champion in 1931 and 1932 and six times Men's World Doubles Champion with partner Victor Barna.



**Richard Bergman** won the World title for Austria in 1936/37 and as a British citizen, took the title on three more occasions. Between 1938 and 1953 Bergman also won the English title on six occasions and was a regular visitor to Merseyside.



**Jack Carrington** was the coach of Johny Leach, and the two teamed up to take the Merseyside Open Men's Doubles title in 1945 and 1948.



**Aubrey Simmons** was a star of the England team that won the Swaythling Cup in 1952/53, and he was rewarded by becoming the first recipient of the Victor Barna Award in the same year. Four times holder of the Merseyside Men's Double title and three times holder of the Mixed Doubles.



**Johny Leach** made history for England when he won the World Championship in 1948/49 and again in 1950/51. A member of the England team that won the Swaythling Cup in 1952/53 he was Merseyside Champion on six occasions.



**Ken Stanley**, English Open Junior Champion in 1937/38 and 1938/39 and an English International. In 1957 he was the national champion of Ireland, India and New Zealand.



THE MERSEYSIDE OPEN CHAMPIONSHIPS, LIVERPOOL, NOVEMBER 26TH, 1938



The scene following the presentation of the prizes by Mr. H. Oldroyd, President of the English Table Tennis Association. Line up of the successful competitors :-

Miss G. Mace, Mrs. L. Harding, Mrs. D. Stead, R. Bergman, Ken Hyde, Mrs N. Norrish, Miss E. Malley, Miss L.R. Barnes and L. Baron. Standing to the left of 'Pinkie' Barnes is Mr. C.E. Bartholomew, President of the Liverpool League and on the extreme left is Mr. W. Stamp, Hon. Sec. of the Liverpool League. Benny Casofsky has his hands on Ronnie Rumjahn's shoulders, with Freddie Cromwell on his left.



## LIVERPOOL INTERNATIONALS



### Don Foulis

Our first International Player in 1929, he represented England in the Swaythling Cup and against Ireland and Wales on six occasions. Five times Liverpool Champion, Don was equally at home on the Lawn Tennis Court and represented the County on numerous occasions.



### Nora Norrish

Merseyside's only woman player to have been chosen for the England 'Marcel-Corbillion' Cup Team. Was Liverpool Champion for four years in succession from 1932. Was a very fine defensive player with the big match temperament.



### Ken Hyde

Played in the Swaythling Cup Team from 1933 till 1939 when he was bracketed with Hyman Luries of Manchester as England's No. 1. Three times Liverpool Champion, three times holder of the Merseyside Title, Ken won more Open Tournaments than any other Liverpool player. He was the first English player to beat the great Victor Barna when he won the Evening Chronicle Cup in Manchester in 1937.



### Joyce Bartholomew

Played against Ireland three times and once against Wales. Liverpool Champion in 1931/2 and won the Mixed on four occasions partnered by Don Foulis, Tom Rotheram, Bob Roberts and Len Berman.



### Eric Hyde

Played against Ireland in 1932 and 1936. Liverpool Champion in 1937 and with brother Ken, won many Open Doubles Titles. He was one of the best stroke players in the country and in 1938/39 was Coach to the League, one of his pupils being R. Rumjahn.



### Rita Doolan

Played against Wales in 1932 and Ireland in 1933/34. Liverpool champion in 1937/38, Rita later married Fred Bamford



### Fred Bamford

A Welsh International and Liverpool Champion in 1934/5 and 1935/6. Represented Liverpool in many Inter-City Matches. His play was characterised by his stolid defence and his 'poker' faced countenance. Known to his friends as 'Pusher'.



### Edie Malley

Represented England against Ireland in 1938/9. Won the Mixed Title with Peter Rumjahn for three years in succession, 1936-37-38



### Peter Rumjahn

Represented England against Ireland in 1936/7. Liverpool Champion 1938/9 and won numerous Open Doubles Titles with different partners.



### Ted Rumjahn

Ted gained International honours for England when he represented his country against Ireland in 1938/39. In 1937 he reached the final of the Junior Singles at the English Closed and only lost out deuce in the third to Ken Stanley of Manchester.



### Ron Rumjahn

Represented England as young as 19 years of age, and toured Czechoslovakia with the English Touring Team in 1946. Liverpool Champion throughout the war years, a title he took on a record nine occasions.



### Bill Pierce

Coached by Bobby Roberts, Bill gained International honours at Junior level when he was included in a touring side of Sweden.

Other 'home grown' Internationals : Annie Pollitt, Ralph Gunnion and John McNee (Scotland).

Other Internationals who have played in the Liverpool League : J. Dass (India), Natasha Williams (Wales), Justine Thomas (Wales), Trevor Manning (Jamaica), Adam Robertson (Wales), Delyth Davies (Wales), Tony Clayton (England) and Mark Thomas (Wales)

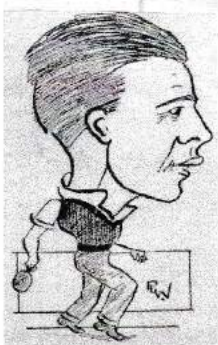


## CUP COMPETITIONS

Over the years there have been many cups, donated to the League, by generous individuals or by others in memory of ex players or officials.

### THE READMAN CUP

In 1931, Mr G.H. Readman, presented a cup to the league for annual competition by all teams on a 'knockout basis'. Mr Readman was a member of the Grove House Club, who won the 1st Division in 1931, and he also represented the league in Inter City matches.



Caricature of Mr. G.H. Readman from the local press, circa 1932

The first final of the Readman Cup was played on Thursday 10th March, 1932, at the Earle Football Club's Pavilion, in Lance Lane, Wavertree and was contested by the Lucem and Royal Liver Clubs. The final should be an inspiration to us all that even in table tennis the under dog can triumph.

At the time Lucem were top of the 1st division and were unbeaten in the season having defeated 1931 league champions, Grove House in the semi final. The team had been considerably strengthened by the arrival from the Thingwall club of England international Don Foulis, and with Huddleston and Cartwright, both City players, the Lucem club must have been very confident.

Not surprisingly they were favourites to defeat the Royal Liver team who were standing in the lower half of the 1st division. Liver were described as a team of keen young players imbued with the fighting spirit and having two extremely promising players in Hare and Roberts.

At the time, teams were of 5 players, with one player playing a player of the opposing team, the best of 5 games, 21 up.

The line up for the final was :

Lucem : D. Foulis, F. Cartwright,  
D. Otty, K. Huddleston,  
A. Reid.

Royal Liver : D. Fell, H. Piper, W. Hare.  
A. Hunter, R. Roberts,

Foulis gained Lucem's first set, defeating Hunter in three straight games and Lucem went into a 2-0 lead when Huddleston defeated Liver captain, Piper.

Matters looked black for Liver when Cartwright won the 1st game against Fell, but Fell put up a great fight to record Liver's first win.

The remaining Liver players, Roberts and Hare were two of the youngest players playing in the league and their mettle was to be severely tested in the

next two games. They both came through with flying colours. Roberts beat Otty to even the score 2-2. In the deciding set between Reid and Hare, Reid won the 1st game but Hare fought back and succeeded in winning the final game amidst great excitement.

Royal Liver had upset all the odds and won the Readman cup by 3 sets to 2, 10 games to 12 and 385 points to 417. In their dramatic fightback, the last three sets went to the full 5 games.

This was surely one of the finest and most dramatic cup finals, fought to the very last game and thoroughly enjoyed by a large audience who gave a standing ovation when Mrs. S. Readman presented the Readman Challenge Cup to H. Piper, the Royal Liver Captain.



C.A.D.W.A. team members, Keith Williams, Kevin Dolder and Phil Musgrove, winners of the Readman Cup, season 1996/97.



Readman Cup Winners, 1997/98  
Wavertree St Marys - Bernie Wentworth, Rob Bevan and Gary Watson.



## F.L. FORREST CUP

In 1935, the Champions of the four regions within the League competed for the Forrest Cup, donated by Les Forrest.

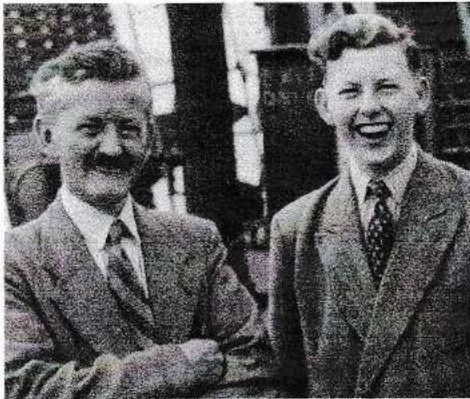
F.L. Forrest, known as 'Sonny' or 'Les' was Les Forrest's son and ended up a Yorkshire County player.

In 1954 competition for the Forrest Cup was discontinued but in 1959 it was competed for again by sides from the Liverpool & District League and the Liverpool Business Houses League.



1997/98 Forrest Cup Winners : Police 'B'

Tom Purcell, Arthur Garnett, Tony Harris and Richie Winckle



Les Forrest and his son, F.L. Forrest, circa, 1954

At the present time it is competed for as a knock out competition for teams from the fourth division.

## THE HYDE CUP

In 1936, the League introduced a Knockout competition, confined to the 53 Regional clubs, for which Mr G.B. Hyde, presented a challenge cup.

Mr. Hyde was father of the famous Hyde brothers and was one of the very early table tennis pioneers in Liverpool and the surrounding area.

At the present time it is competed for as a knock out competition for teams from the third division.

## THE STAMP CUP

In 1947, the Secretary Bill Stamp donated a challenge cup, to be known as the 'Stamp Cup, and competed for annually on a knock out system for teams in the youth division.

In 1952, when Junior Divisions disappeared, the Stamp Cup was contested by teams of three players, with only one team being allowed entry per club.

At the present time it is competed for as a knock out competition for teams from the fifth division.

## THE J. RUMJAHN CUP

The Rumjahn Cup was donated to the League by Doctor Jaffir Rumjahn, affectionately known as 'Doc Rummy' and father of the famous brothers. It was first competed for in the 1952/53 season and was won, perhaps fittingly by Rafters 'B'.

At the present time it is competed for as a knock out competition for teams from the second division.

## THE WARREN DAVIES CUP

Was donated to the League in memory of Warren Davies who was a member of Liverpool Jewish T.T. Club by his widow, Estelle. It is presently awarded to the First Division Champions.

## THE RENEE STURGEON CUP

In memory of Renee Sturgeon and presently awarded to the winners of Division Two.

## GORDON BROWNLEY CUP

In memory of Gordon Brownley and presently awarded to the winners of Division three.

## LINACRE CUP

Presented to the league by members of the Linacre Club in 1988 for presentation to the winner of the Vets title at the Liverpool Closed tournament.

## THE MAXWELL FYFE CUP

The Maxwell Fyfe Cup was first competed for in 1952 as a handicap cup knockout competition for men, the first winner being A.C. Taylor.

Maxwell Fyfe was a Member of Parliament for West Derby and interestingly, a judge at the Nuremburg trials. The cup was last competed for in 1963.

## THE W.S. ROMAIN CHALLENGE CUP

This cup was presented to the League by Mr. Romain, League Treasurer from 1934 to 1937 for presentation to the winner of the Junior Singles title at the Liverpool Closed Tournament.



Ted Rumjahn, aged 14 yrs, with the W.S. Romain Cup, after the first of three successive Junior Singles titles at the Liverpool Closed Tournament.



### C.E. BARTHOLOMEW CUP

This cup was presented to the League by its namesake, former Chairman and President and originally awarded to the Regional Handicap Singles winner. It was then competed for as a Ladies Knockout cup competition from 1937 to 1972.

### THE FRANK MURPHY CUP

Frank Murphy died in a motor car accident on 20th January, 1988, on his way home from Ludlow races. Horse racing was his first sporting passion but it was closely followed by table tennis.

Frank started his career at Rafters and then Beauclair, before moving to Walsall where he played for a number of seasons in the local league.

On his return to Liverpool, he joined Ted Birch and Mike Allen at Beauclair and when Beauclair closed, all three joined Alan Chase at Maghull, before eventually all four joined English Electric in 1987.

The team would meet before every game at some convenient hostelry and much leg pulling and a great deal of laughter would be the normal order of the day, invariably centred around Frank's effervescent personality.

After Frank's death, Ted Birch, Mike Allen and Alan Chase purchased a cup and the League agreed to change the name of the recently created Veterans' competition to the Frank Murphy Cup and its popularity has grown year by year.

### THE DAVE NEWTON CUP

In memory of Dave Newton who started his table tennis career with Trinity in the Sunday School League. He continued with them and Maghull Co op in the Liverpool League, and then went onto Maghull with his very good friend, Alan Chase and others. It is presently awarded to the winners of Division four.

### THE ERIC TAYLOR CUP

In memory of Eric Taylor who was a long serving member of Maghull Community Association Table Tennis Club. It is presently awarded to the winners of Division five.

### JOHN BARTHOLOMEW CUP

Was awarded to the Womens Regional Singles winner.



Bartholomew Cup final 1951, Rafters v Bibbys. Won by Rafters - Pat, Olwyn, Pinky May, Kay, Bluey May, Doreen Hogg, Dot Ball, Joyce Cook, Gladys Brown, Muriel Bannister.



From left to right - Frank Murphy, Ted Birch, Alan Chase and Mike Allen. Ted, Alan and Mike have played together for many years and have been the mainstay of Liverpool Veterans' second team in the Lancashire and Cheshire League.

### S.W. RICHARDSON CUP

Was presented to the Womens Singles Winner at the Liverpool Closed .

### F.W. LAKE CUP

Was presented to the Men's Regional Singles Winner in the 1940's.

### L.J. COLDRICK CUP

Was presented to the winner of the Novices' Singles event at the Liverpool Closed Tournament in the 1930's.

### THE D.M. FOULIS CUP

The D.M. Foulis Cup, presented to the league by its famous namesake, was first competed for in 1952, as a Ladies Handicap Cup Knockout competition, the first winner being Miss J. Lloyd.

No doubt other cups have been donated to the league over the years in memory of loved ones. If I have failed to mention such a loved one and the cup concerned it is simply that those mentioned above are the only ones I have been able to trace.



## PERSONALITY PARADE

There have been many, many individuals over the years who have contributed to table tennis and the Liverpool and District League and it would require a book on it's own to record everyone concerned.

At the risk of upsetting past or previous members I have only included details, where available, of individuals with a longevity of service to the League which will probably remain unequalled or for achievements on the playing front. In addition, the list is not in any order.

### W. Stamp



Mr W. Stamp, Billie, as he was known, came into the sport by purchasing the Wembley Lawn Tennis Club in Liverpool and introducing table tennis during the winter months.

In 1933 he entered a team in the Liverpool league and played for them himself, despite having an artificial leg, a relic of his Navy days during World War One.

Three years later, Billie's interest in the league led him to take over the duties of Hon. Treasurer and in 1937, following the departure of Les Forrest he combined the position of Hon. Secretary and Treasurer.

Throughout the Second World War he ran the League almost single handed and due, largely, to his own herculean efforts, in the fifteen years following the War, the League flourished into 16 divisions with 1,300 players.

Billie Stamp was described as, 'blunt, direct, as rugged as a rock and often as unyielding, yet the bluff exterior conceals a warm personality, rich with all the human qualities which draw ones affection like a magnet'.

During his twenty years in Office, his

duties extended far beyond Liverpool. He was a member of the Lancashire Selection Committee, Chairman of the Registered Players Panel, Chairman of the Lancashire League, a member of the English Selection Committee and the North West Representative on the ETTA National Executive Committee.

Bill was also awarded the highest honour available, that of 'Life Member' of the E.T.T.A.

### Eddie & Wyn Cameron



Eddie's involvement with table tennis in Liverpool goes back to pre-war days when he organised Victoria Park, a church club team, which played in the Sunday School and Church Leagues, before he entered them in the Liverpool league for two seasons prior to the war.

Eddie was called up for national service in 1939, married Wyn in 1942, and was demobbed in 1946, returning to Liverpool. He got straight back into table tennis and was the Secretary of the Victoria Park Club, who played in the

South Region of the League. The peak of Eddie's playing career came just after the war when he was selected to play for the South Regional team.

In 1955, the League Fixture Secretary, George Williams, gave notice of an impending move to Birmingham, due to work commitments. Bill Stamp sent him to see Eddie and in a rushed half hour Eddie was briefed on the job and handed the record book. At the following A.G.M. his appointment as Fixture Secretary was confirmed and remarkably he was to continue the job until 1994.

For an amazing 39 years he performed his duties in a quiet and cheerful manner and the League A.G.M.'s were enhanced by his eloquent and humorous reports.

Eddie was greatly assisted by Wyn, so much so that she earned the title of 'Mrs Fixture Secretary' and her service was recognised when she had the status of League Vice President conferred on her. Eddie recalls that, 'telephone callers would ask for Wyn, rather than me, preferring her chat up lines'.

The League acknowledged Eddie's sterling service as long ago as 1964 when he was awarded the 'Stamp Award of Merit' and in 1985 he was awarded an E.T.T.A. Award of Merit.

The League's highest accolade of 'Life Member' was bestowed upon him in 1991 and although he has now retired from the post, Eddie is still a regular visitors to League 'Finals Nights'.



Victoria Park team-mates, circa, 1965. Back row - Stan Harvey, Rob Conley and Eddie Cameron. Front row on the left is Tony Thatcher. Stan and Rob are both still playing table tennis and represent Plesseys and Manweb, respectively.



## Arthur Upton



Born in Litherland in 1919 Arthur's love of Table Tennis began when he joined his school's Old Boys Association in 1935 and one year later he won the individual table tennis championship.

In 1939 with the outbreak of World War 2 Arthur volunteered for the armed forces and served in the Royal Engineers where he represented the army in inter service Table Tennis matches.

Invalided out of the army he joined the Civil Service Defence Corps and later became Chairman of the Bootle Civil Defence Social Club where he promoted the game of table tennis. In the late 1940's he entered a mixed team in the Liverpool & District League, John McKim joined the club and so began a friendship that lasts to this day.

When the Civil Defence Club lost its premises Arthur, his wife Lil and several others joined the Oakhill Club in Deane Road, Arthur acting as Club Secretary. When an opportunity arose to play nearer home Arthur and Lil moved to the Orrell Wardens Club in Harris Drive, Bootle where Arthur became Club Chairman. The Orrell club boasted teams in both the mens and womens divisions of the L.D.T.T.L. and both Arthur and Lil played on a regular basis until Arthur suffered a heart attack in 1969 which brought a stop to his playing days in the sport.

However, by this time he was deeply involved in the administrative side of the sport holding the positions of Chairman of the L.D.T.T.L., the Lancashire County Executive Committee and of the Lancashire and Cheshire League.

Arthur was elected Chairman of the Liverpool League in 1958. In 1962 he was elected to the Lancashire County Executive Committee and was elected Chairman of that Committee in 1964. In 1968 he was elected Lancashire representative on the National Council.

The same year he was appointed Chairman of the newly formed Disciplinary Committee of the E.T.T.A. and he held that position until 1999. He also served for some years on the E.T.T.A. Rules Committee and in the 1970's served for five years on the E.T.T.A. Management Committee.

His service to the E.T.T.A. nationally has been acknowledged by his appointment as a Vice President of the Association and in 1981 he was granted Life Membership of the ETTA for, as the official citation reads, 'his exceptional service to the sport of Table Tennis, especially his integrity, tact and courage as Chairman of the Disciplinary Committee'.

Within the closer confines of the Liverpool League Arthur holds the position of League President and has been awarded the Stamp Award of Merit and Life Membership of the League, both honours rarely bestowed and only to a person who has made an exceptional contribution over many years. He is also a Vice President of the Bolton League and the English Veterans Association.

Arthur retired as Chairman of the League in 1998 after an amazing 40 years in the post, and in recognition of this outstanding service he was awarded a 'Scroll of Honour' on behalf of the E.T.T.A. and the Liverpool League.

## John McKim



Having previously served for a couple of years as a co-opted member of the tournament committee in the capacity of Deputy Referee, followed by a full year as an Elected Member of the Management Committee, John's administrative expertise was put to its greatest test at the commencement of the 1957 season.

This arose due to the sudden death of Bill Stamp who had for so many years guided the fortunes of the League. The League were confronted with the task of filling an Office with someone who was both willing and able to devote the time and

enthusiasm necessary to ensure that the League affairs continued to be efficiently administered.

Undaunted by the knowledge that his predecessor had set such a high standard, John undertook the task with a pleasant and obliging manner which over the years became so characteristic of him.

During his playing career, which dated back to 1938 John played for several clubs, namely Beauclair and Liverpool Jewish, and he will be remembered as a sporty competitor, friendly to his opponent whether he won or lost.

The league acknowledged John's dedicated commitment in 1961 when he was awarded the Stamp Award of Merit, 'in recognition of the meritorious service which he has rendered and continues to render to table tennis in Liverpool'.

In presenting the award, Chairman Arthur Upton paid tribute to the manner in which John, after Bill Stamp's death, had undertaken the major task of administering the league's affairs with a quiet efficiency and obliging manner which had earned him the respect of players and officials alike.

John's service to table tennis has extended far and beyond Liverpool. He joined the Executive Committee of the Lancashire County Table Tennis Association in 1959 and in 1968 was elected to the Office of Hon. Secretary of the Association, a position which he held for many years.

In those early days the Lancashire and Cheshire County Association and the Lancashire and Cheshire Table Tennis League met as a combined body and for four years, from 1968, he also fulfilled the role of Secretary for the other two organisations. For two years he represented Cheshire on the E.T.T.A. National Council.

John was a member of the E.T.T.A. Tournaments and Rules Committees, and a member of the E.T.T.A. Board of Appeal.

His contribution to the sport at all levels, including national was recognised in 1983 when he was elected as a Vice President of the E.T.T.A.

John's service with the Liverpool League stretched over five decades, 42 years an official and a staggering 38 years as Hon. Organising Secretary.



## Alex Gould



Alex is the oldest playing member in the League having begun his table tennis career in 1938 at the Crosby Mission Club.

When the war started he joined the Royal Engineers and upon his release into the T.A. reserves in 1945 he joined the Birchdale Road Methodist Church team.

In 1948 he founded Bath Street Table Tennis Club in the local Methodist Church Hall before the club moved to the present premises in the North Yard, College Road.

Alex was a founder member of the Veterans English Table Tennis Society and in the first national Vets' Championships in 1984, with partner W. French, Alex won the over 60's Men's Doubles title and reached the semi finals of the Over 60's singles event.

Alex has had two stints on the Liverpool League Committee, the first in the late 1950's when he served as Youth Representative and the second, continuously since 1976.

He has passed an E.T.T.A. Club Coaching Award and is also a County Umpire. Pen holder Alex is currently playing in the 4th Division of the League where he remains a worthy opponent.



Penholder, Alex Gould in action, 1971.



In 1999, Bath Street celebrated its 50th anniversary with a dance. From left to right - Kate Attwood, Ron Georgeson, Simon Goldthorpe, Helen Elliot, John Langton, Alex Gould, Geof Aspinall, Stan Genaro.



## Ken Armson MBE



Although a player and Club member previously, Ken Armson's ability as an administrator became generally evident as far back as 1966 when he was elected as Secretary of the Wavertree Labour Club's Table Tennis Section, a position he continues to hold today, although the club has recently changed venue and its name to Wavertree St. Marys.

In 1967 Ken was elected as a member of the League's Management Committee and continues to provide a valued service in that capacity. For many years he has made an important contribution to the league's 'Digest' magazine as correspondent, Co-ordinator and is presently in his third term as Editor of the magazine.

In 1991 Ken took on the task of Administrator of the League 100 Club, a fund raising project which continues, to benefit the League and its members.

Another service Ken continues to provide is that of League Statistician, and in more recent years he has been the driving force behind the League's weekly coaching sessions for youngsters.

Although still active in the League as a player, Ken is also an International Umpire and a qualified Match Referee and the E.T.T.A. derives considerable benefit from his expertise.

In 1993, Ken was awarded the E.T.T.A. Merit Award and in 1997, he was awarded the Stamp Award of Merit.

In 1998, after acting as Assistant Referee to Brian Leeson for so many years, Ken was elected Tournament Secretary and League Referee.

An even prouder moment for Ken, although not related to table tennis, was the award of an M.B.E. in 1996, in recognition of a lifetime service to the Railways.

## Don Davies



Don was elected onto the League's Management Committee in 1972 and in 1974 he was elected as the League's Match Secretary. Responsible for the Mens, Ladies, Juniors and Veterans teams participating in the Lancashire and Cheshire league, Don continues to fulfil this role today, with the same enthusiastic approach that was evident almost 25 years ago.

Don voluntarily undertook the task of establishing contact with the media and his weekly table tennis column, published in the Liverpool Echo has ensured much needed publicity of League affairs.

The League has also benefited by Don's ability to approach business people to obtain sponsorship, particularly from Bill Fawley Construction Company, who, by sponsoring the League's Closed Tournament, have ensured its continuation over the previous years.

As an unofficial keeper of records, Don's knowledge has been put to good use in the detailed historical information and player profiles he provides for League programmes, in particular, the Closed Programme.

As Match Secretary, and non playing captain of various city teams, Don has played a major role in bringing latter day honours to Liverpool City teams.

In 1993, Don's outstanding service was recognised when he was awarded the E.T.T.A. Merit Award and in 1997, he was awarded the Stamp Award of Merit.

Despite the many tasks Don carries out on behalf of the Liverpool League, in 1998, he took over the onerous task of Honorary Secretary of the Lancashire and Cheshire League. In the same year, Don was also elected as Vice Chairman of the Liverpool League and he became Chairman in 1999.

## The Rumjahn Family



**Doctor Jaffir Rumjahn** (affectionately known as 'Doc Rummy') must take the credit for the success of his three famous sons, as it was he who introduced them to table tennis as children, when they used to play on the dining room table at home.

Doctor Rumjahn came to this country, aged 14 years, with the Indian contingent, for the King Edward 7th Coronation and he liked it so much he stayed.

In his youth, the Doctor obtained a University blue for cricket, lawn tennis, soccer and rugby, between 1909 - 1913 and whilst studying at Liverpool Institute won the 'Victor Ludorum', running cup for 3 years in succession. Ted, the middle son, won the same trophy, many years later.

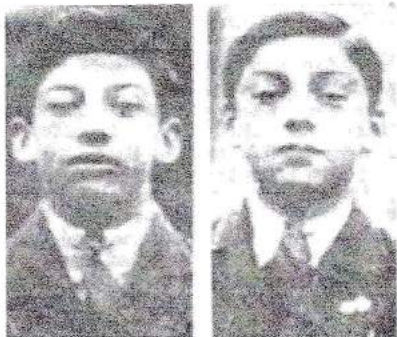
He did not reach any heights himself on the playing side but his sportsmanship was said to be an example to all and no doubt resulted in the fine sportsmanship shown by his sons. The Doctor managed the successful Clubmoor side before the war, and after the war was heavily connected with the Rafters Club, for whom he held the position of President. Doctor Rumjahn was also a Vice President of the Liverpool league before his death in 1961.

All of the Rumjahns represented their county at Hockey and figured prominently in the city's cricketing circles. They were all England International table tennis players. The boys were all left handed, while the doctor was right handed.

**Peter**, the eldest, was first noticed for the International field at table tennis, playing an English trials match at the Y.M.C.A., Manchester, when he defeated Haimie Laurie, the jointly ranked number one for England. In the same year, Peter beat Swaythling Cup player, Adrian Hayden



in an inter city match and International honours were not long in coming. He first wore an England Table Tennis shirt in 1936/37 when he played against Ireland. His behaviour was described as 'a model for any young sportsman to copy'. As an army sergeant, along with brother, Ted, he represented the Western Command at Hockey. In addition Peter was a prolific runner and a useful change bowler for the Northern Cricket Club in Liverpool.



Peter and Ted Rumjahn

Peter won the Liverpool Closed Singles title in 1939 and won many doubles events at the various North of England Open tournaments. He remains a Vice President of the League.



Peter Rumjahn

Ted blossomed in Table Tennis in 1938 /39 when the International selectors could no longer ignore him and he played against Ireland.



Ted Rumjahn

Described as 'cheery and always ready to joke', he played cricket for the Huyton club, the same team as Ken Hyde. Junior Champion of Liverpool, 1934-35-36,

Ted went on to win the Men's Singles title at the 'Closed' tournament on three occasions, 1948, 1951 and 1957. He also is a Vice President of the League.

Ron is the baby brother and he toured Czechoslovakia with the English Table Tennis team in 1946, while still in the Forces. He was described at the time as 'a real stylist'.

He represented the army in Hockey and also turned out occasionally for Huyton Cricket Club.

Ron was Liverpool Champion throughout the war years and made the Montague Burton Cup his own property winning the title on nine occasions in all, between 1943 and 1954.



Ron Rumjahn

### The Family Hyde

'Pop' Hyde, famous father of the famous Hyde brothers was one of our local table tennis pioneers, taking the 'boys' Rumjahn and Hyde on exhibition tours mainly of South West Lancashire but to all parts of the country as well, to further the cause of the game. They were often joined by the world famous circus of Barna, Bellac and Szabados.



Mr. G.B. Hyde

Cecil, Eric and Ken were the Hyde brothers but it was the latter two who really made their presence felt in the game and they formed a superb doubles partnership.

They had connections with Elm Hall Drive, Bohemians and the strong City

Club where they carried out most of their practise. The brothers were best known, however, as members of Clubmoor, which was attached to the Cricket club in the rear of the old Clubmoor cinema in Townsend Lane.

Ken Hyde was capped for England against Ireland in 1932 and in the seven years that followed he represented his country against France, Germany, Hungary, Czechoslovakia and the U.S.A.



Ken Hyde

He played regularly for the Swaythling and Dinard cup teams. Three times Liverpool Champion, Ken was described in the 1946 'Open' programme as, 'the finest attacking player we have ever had'.

Ken won most Open tournaments, including the Lancashire, Cheshire, Welsh, and Midlands, but did not manage to win the English Open. One of his outstanding performances was to beat the great Victor Barna in the Evening Chronicle tournament in 1937, becoming the first Englishman to beat Barna in tournament play.

Eric Hyde played for England against Ireland in 1932 and 1936. He was Liverpool Champion in 1937 and with brother Ken won many Open Doubles titles. He was one of the best stroke players in the country and in 1938 was Coach to the league, his pupils including Jack McCaig and Peter Rumjahn.



Eric Hyde

At a time when super sales promotions were little known Eric and Ken Hyde bats were sold in their thousands. Ken Hyde became President of the league in 1958 and remained in Office for over 30 years.



## Jim Green



Jim first became associated with the League in 1929 when he joined the Pastimes Club. In the intervening years he joined several clubs but it was with the now defunct Linnets Club that his name will always be remembered.

He was a player and Club Secretary for many years before he became a member of the League Management Committee, Editor of the Digest Magazine, City Match Secretary and keeper of League records. He had previously refused to accept nomination for the Committee as he felt he could do more for the game by being unfettered and free to speak his mind. And speak it in forthright terms he did, on many occasions, and although not always in agreement with him, most people could see the sincerity behind his comments.

Jim had a forgivable fondness of posing as a cynic but behind the facade was a burning desire to help foster the game of table tennis and see the Liverpool League and its players a real power in the table tennis world. Of all his ambitions connected with table tennis, only one was personal - to complete 40 years association with the Liverpool League, and fate was unkind enough to rob him of that by a mere fortnight.

### Linacre TT Club

In 1948, after playing together in the Liverpool Boys' Association, and after forming Linacre Boys' Club, five enthusiasts banded together to form a team to play in the Liverpool League. The players concerned were Alec and John Davidson, Tom Larkin, Frank Lacey, and D. (Mac) McGonigle.

They played for three years in the North Division, had one season in the fifth and then 'jumped' to the 3rd when the Wirral Clubs left to form their own league. With Jack Davidson as Secretary, these five played together for seven seasons and in that time turned out 'short' only twice, both times through illness.



F. Lacey, D. McGonigal, A. Davidson, H. Reeve and J. Davidson, circa 1950

Then the membership took on a 20% increase when Arthur Moorhead joined and at the same time the late Tommy Larkin took over the job of Secretary. New players, such as Harry Reeve, Mike O'Neill, Ron Purnell, Alan Horwood and Ken Ainsworth, joined the team over the years, but whoever the faces, you are always assured a very warm welcome and a hard battle from the Linacre boys.

Alec Davidson kept a book for many years in which he entered a copy of the score card of every match ever played by Linacre. In 1965 an article in the Digest magazine reported that Frank Lacey had recorded his 500th win in the league from 782 games played!

One record that Frank does claim is that of never having bought a table. Jack Davidson made their first from old wooden bulkheads from merchant ships. In 1971, the players decided they needed a new table, so Jack made another one and sold the original for £20.00.

Frank Lacey and the Davidson brothers are still playing in the Liverpool League and with their team mates, remain as competitive as ever. In 1998, the club

celebrated its Golden anniversary and in wishing them well, I would like to echo the comments of many down the years. "You are a credit to the game and long may Linacre continue".

### Albert Montgomery ('Monty')

Monty's association with the Liverpool league began in 1931 when he played for Central YMCA in the old South region. Although never one of the greatest players, in the immediate post war period he played on several occasions in Liverpool teams, and was a model of sportsmanship both on and off the table.

Monty served on the League Management Committee for over 20 years being originally elected in 1946. During his years on the Committee he held the position of Vice Chairman and was subsequently elected a Life Member of the League in 1964.

Monty was a qualified county umpire, served on the Board of Appeal and edited the 'Digest' magazine for a number of years. He was also a founder member of Rafters Table Tennis Club in 1945.



Linacre, 1998. Back Row - Norman Appleby, Harry Reeve, Ken Ainsworth, Front Row - Alex Davidson, Frank Lacey, Jack Davidson.



## FIFTY NOT OUT - courtesy of Ted Birch



Back row - Harry Reeve, Mike Allen, Ken Nelson, Alan Reid, Austin Hayden, Alan Chase.  
Middle row - Alex Davidson, Jack Davidson, Norman Appleby.  
Front - Frank Lacey, Ted Birch and Ken Ainsworth.

On Friday 24<sup>th</sup> April 1998, at Waterloo, a 'select' Waterloo team comprising Ted Birch, Alan Chase, Mike Allen, Ken Nelson, Alan Reid and Austin Hayden took on the full might of the Linacre squad, comprising, Harry Reeve, Jack Davidson, Ken Ainsworth, Frank Lacey, Alex Davidson and Norman Appleby, to a challenge match to celebrate Linacre's 50th Anniversary.

All the Waterloo team (apart from Mr Reid) arrived in good time only to find Jack Davidson, Frank Lacey and Harry Reeve hard at practise. One up to Linacre!

The next setback to Waterloo's hopes was the sudden incapacity of Alan Chase, who had to go for a lie down, when he overheard Frank Lacey tell Jack Davidson that 'young Ainsworth' had just arrived.

Waterloo then played a master card by announcing that there was a free bar only to

be trumped by Linacre, who promptly ordered 6 pints of shandy, which resulted in Alan Chase, who by then had only just recovered from his first shock, having to be taken away again for the second time.

The match then proceeded uneventfully until half time when Ted announced that there would be an old fashioned half hour break for refreshments and chat. Ted then tentatively enquired whether the Linacre lads required tea or alcohol. As Ted went off to make six cups of tea, Alan Chase was for the third time laid down in a darkened room. The tea interval was filled with many wonderful reminiscences and much general bonhomie.

The first half of the evening, comprising six singles matches had been hard and sportingly contended but the mood changed in the second half, which comprised three doubles. Each doubles pairing comprised one Waterloo

player and one Linacre player. The mixing of the teams in this way produced much agitation and aggression amongst the players and had it not been for a virtuoso umpiring performance from Ken Ainsworth, red cards would certainly have been shown.

The match ended in a victory for Waterloo select by 7 matches to 2 or so they thought! However, the wily Linacre side proudly announced that not only had they drunk the bay dry of shandy, but they had actually won the match by 250 to Waterloo's 207. No dear reader, not the combined ages, but quite unbelievably the combined number of seasons played in the Liverpool League by the Linacre team.

At this point, both teams engaged in much mutual congratulations and Jack told young Ken it was time for bed and Alan finally had to be taken away and may never be seen or heard of again.



### **Don Cameron**



Don gave conscientious service as league Treasurer during a 31 year period from 1957 to 1988 when due to health reasons he found it necessary to resign.

Throughout his lengthy tenure of Office the league benefited from the experience of his profession as an Accountant.

Acknowledgements of Don's service to the game of table tennis were made in 1985 when he was presented with an E.T.T.A. Award of Merit.

At the A.G.M. of 1989 he was bestowed with the honour of Life Membership and awarded the Stamp Award of Merit, 'in recognition of outstanding service to the League'.

Brother of Eddie, Don was associated with a number of clubs, namely Victoria Park and then Liverpool Jewish, who took over Beauclair's premises.

### **Dr. Des Loughrey**

A man of intellect and enthusiasm, Des was joint Editor of the 'Digest' with Jack Pattison in its earliest years, from 1950 to 1957.

He was an elected member of the League Management Committee from 1953 to 1956 and Match Secretary in 1956/57.

Des was an anaesthetist by profession, rising to be President of the Liverpool Anaesthetist Society.

He was an exceptionally keen follower of Huddersfield Town Football Club, watching all their matches, home and away.

### **C.E. Bartholomew**



Known to his friends as 'Chas' or 'Barty', Mr. Bartholomew was a highly respected business man and was Chairman of the League from 1930 to 1932, and then President, 1933 until his death in March 1961.

### **Jack Pattison**



As joint Founder Editor of the 'Digest' magazine, Jack played a prominent role in the League's success.

It was, however, in pursuance of his journalistic profession that he will best be remembered and his regular table tennis features in the local press under the nom de plume of 'Dunbar'.

Jack was one of the league's respected Vice Presidents, an acknowledgement he deservedly earned for long and devoted service.

### **Jack McCaig**



Following a conversation between Jack and Albert Montgomery, on the steps of the Adelphi Hotel, Rafter's Table Tennis

Club was formed on 4th September, 1945. Jack played for the club until he retired from competitive play in 1960.

Perhaps not the greatest stylist in the game, Jack was nonetheless possessed of a most consistent and aggressive attack, which coupled with a stubbornness, disinclined to accept defeat until after the very last shot had been played and lost, made him a worthy opponent.

Jack represented Liverpool on many occasions and he won the Mens Doubles title with partner, A. Simpson, in 1945/46. He served on the League Management Committee from 1958 to 1989, and in the 1960's spent several years as League Match Secretary.

### **The May Twins- Pinky and Bluey**



It was after seeing an exhibition match that first inspired the ambitions of the twin sisters, Kathleen and Lillian May, better known as Bluey and Pinky.

Both players joined the East Wavertree Club and had coaching from both Harry Knibbs and Bobby Roberts.

Despite their great similarity in appearance, their opponents soon learned to distinguish between them by their style of play - Bluey was the aggressor and Pinky the defender.

When Rafter's Table Tennis Club was formed in 1945 Pinky and Bluey were founder members and as well as playing for the club they also did their share as club workers, on the Committee and in turn as Club Secretary.

Both players represented Liverpool and Lancashire on many occasions and were members of the team which made Liverpool history by reaching the final of the Rose Bowl.



Bluey was Liverpool champion in 1947/48 when she beat her sister in the final, and in 1956/57, and the twins annexed the Ladies Doubles title at the 'Closed' tournament on six occasions.

Lillian later married Mr Ron Rumjahn and Kay married Mr Clint Casselman, and emigrated to Canada.

### Don Foulis



In the days when coaching schemes were unknown and the only way to success was by practice, Don gained all the honours the game could offer. He received his first international honours against Wales in 1929 and again in 1930. He played against Ireland in four successive years, 1930 - 33 when he was chosen to play in the England Swaythling Cup team in Paris.

Don won many open tournaments in the Midlands and the North and in 1931, in partnership with Mr H.C. Cooke of Manchester, won the English Open Doubles title.

He was supreme in Liverpool for many years and in the six years from 1928 to 1933 was closed champion five times, four of them in succession. He also held the Doubles title with Tom Rotheram three times and once with G.H. Readman.

Although he played with Thingwall in the early years, Don was mainly associated with Lucem for whom he played until he left Liverpool in 1955.

Don was a member of the league management and Selection Committee in 1930, 1931, 1945 and 1946. He succeeded Mr T.G. Brandreth as Chairman in 1947 and remained in that Office until 1954.

### T.G. Brandreth



Mr. T. G. Brandreth was a great supporter of table tennis in Liverpool and was one of the organisers of the first major table tennis tournament in Liverpool in 1902.

Over thirty years later, when table tennis was reborn, Mr. Brandreth became Chairman of the League. Along with Secretary, Bill Stamp, Mr. Brandreth deserves great credit for keeping the League going during the difficult war years.

He retired as Chairman in 1947 and during all these years, whether it was the Liverpool Closed or Merseyside Open Tournament, Mr. Brandreth was one of the joint Referees.

Mr. Brandreth was described as always cool, calm and collected. He owned a sports shop in Cooks Arcade and was a keen supporter of New Brighton Football team

### Brian Leeson



Brian Leeson began playing table tennis in 1954 when, after meeting Peter Rumjahn, he formed the Fairlawn Table Tennis Club.

Not reaching any great heights as a player, it was as League Tournament Secretary and Referee that Brian found his forte.

After joining the League Committee in 1960 Brian took over the running of the 'Closed' Tournament in 1962 at Dingle Vale School and amazingly, continued in that post for 36 years, retiring in 1998.

Brian was one of the first International Referees in the region and his expertise has been well used not only locally, but nationally.

Brian was awarded the Stamp Award of Merit in 1993, and after serving the League as Vice President for a number of years, was, in 1998, awarded the highest accolade available, that of Life Member.

### Jack Lambert



Jack first signed for the League in 1935 but it is as Secretary of the English Electric Club that he is most remembered.

The club was founded in 1947 and in 1948 Jack took over as Secretary, and remained in post until the club folded in 1994. During that time the club was one of the premier clubs in the league.

Jack played for the club in the 'old' North region and was a doughty opponent, generous in victory or defeat.

Jack served as Editor of the League's Digest magazine from 1972 to 1996, and his dedicated commitment over those years, attending cup finals, the 'Closed' and other table tennis events, enabled him to include reports based on first hand knowledge.

Jack was ably assisted by his wife, Minna, who typed the Digest notes for an amazing 20 years before her untimely death.

Jack's commitment to table tennis in Liverpool has previously been acknowledged.

In 1982 he was awarded the Stamp Award of Merit and an E.T.T.A. Merit



Award. Following a number of years as Vice President of the League, he was in 1995 accorded the highest accolade the league can bestow, that of Life Member.



English Electric's Jack Lambert 'a doughty opponent, generous in victory and defeat'.  
Circa 1960.

### **Keith Williams**



Born in Huyton near Liverpool, Keith attended Huyton Secondary Modern School and having become interested in table tennis he subsequently joined the coaching sessions at the school, organised by former England International and three times Liverpool League Singles Champion, Ted Rumjahn.

Showing great aptitude for the game he quickly gained selection for the school team and in 1969 he joined the famous Rafters Club in the Liverpool and District League. After only a couple of seasons he established his place in the Club's 2nd team playing in the first division.

After finishing his Junior days in 1975 Keith immediately became an active part of the Senior scene and within two years

he'd gained a permanent place in the Liverpool 1st team, where he has remained since. In 1977 he collected the first of his eight Liverpool Men's Singles titles, a feat, if put into perspective, is bettered only by former England International, Ron Rumjahn, who won the title ten times between 1942 and 1954.

Numerous Lancashire County representative honours followed, together with the County Men's Singles and Doubles titles. Keith has six Lancashire and Cheshire Champions medals as well as five Norman Cook Memorial Trophy winners medals.

Keith has served on the Liverpool League Management Committee since 1984. In 1989, his contribution to the sport was recognised when he received an E.T.T.A. Merit Award. The application from the League refers to Keith as, " being a first class sportsman, one highly regarded by all within the game, a credit both to himself and the League which he has served so well."

### **CONCLUSION**

It is a credit to many hard working committee members that the Liverpool and District Table Tennis League has been in operation for 75 consecutive years and it remains the strongest league in the region. In this anniversary year there are 16 clubs, 58 teams and approximately 250 members competing on a weekly basis.

Liverpool is once again a haven for table tennis enthusiasts nationally and internationally with the Merseyside Open and Liverpool Junior 3 Star tournaments now firmly established in the E.T.T.A. calendar.

Weekly junior coaching sessions in various locations are well established in the city and it is only a matter of time before we see a top Liverpool Junior emerge from the ranks.

The League has a Committee determined to make further progress in developing table tennis in Liverpool and with the continuing support of the Liverpool City Council Leisure Services Directorate, the future of table tennis in Liverpool is secured.



## 2001 PICTURE GALLERY



Aigburth 'A' - Derek Trainer, Lee Proffitt, Bill Holmes and Eric Young



Bath St Vets 1 - Fred Bainbridge, Ken Jackson and Les Gee



Bath St 'D' - Billy Clayton, Neil Pritchett, Eddie Williams and Reg Edwards



Bath St 'E' - Chris Blackburn, Dave Cunningham, Dave Batty and Dave Stodden



Bath St 'G' - Eugene Berger, Graham West, Scott Mummery, Matt Rawlinson and Richard Woodley



Bath St 'H' - Barbara Alcock, Lil Randles, Beryl Matchett and Simon Goldthorpe



Bootle YM - John Higham, Danny Every, Matt Poerschke and Roly Wright



Bootle YM 'A' - Jim Geddes, Jim Cannon, Mike Hughes, Albert Rivers, Arthur Garnett and Peter Williams



Bootle JC - Brian Crolley, Roger Neal and Dave Graham



55 Bootle JC 'A' - Bill Harris, Cherith Graham and Sylvia Graham





CADWA 'C' - Peter Roberts, Rob Peverall, Allan Davies and Ian Burrows



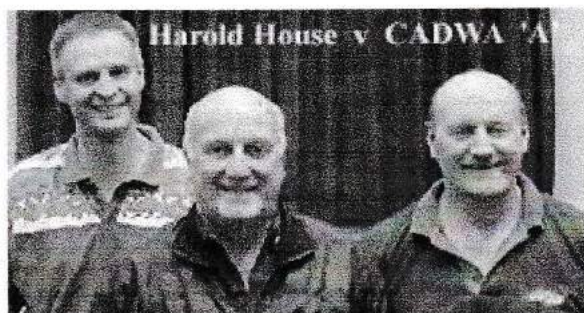
CADWA 'D' - Jack Highton, Doug Baker, Trevor Dolder and Steve Critchley



Fords 'A' - Graham Reid, Alf Perry, Frank James and Bill Proffitt



Greenbank - John Sherratt, Tony Edge, Tony McMullen, Scott Davies and Mark Mogan



Harold House - Ken Connor, Alec Bryce and Ray Jackson



Harold House 'A' - Mike Poole, Martin Rogers, Paul Morgan and Dave Cohen



Linacre - Norman Appleby, Harry Reeve, Jack Davidson, Ken Ainsworth and Frank Lacey



Liverpool Ladies - Brenda Buoeu, Sue Burgess and Alice How



Liverpool YM 'B' - Mikael Bellec, Russel Thornton and Steve Kee



Liverpool YM 'C' - Jimmy Clewett, Alvin Tso, Russell Thornton and Johnny Tsang





Liverpool Vets 'B' - Ahmed Thabet, Brenda Buocoy and Ricky Brown



Maghull - Allan Jones, Fred Pheysey and Matt Wilson



Manweb 'A' - Les Molyneux, Allan Evans, Paul Evans and Paul Jennings



Marconi 'A' - Bobby Bell, Frank McCann, Andy Owens and John Moore



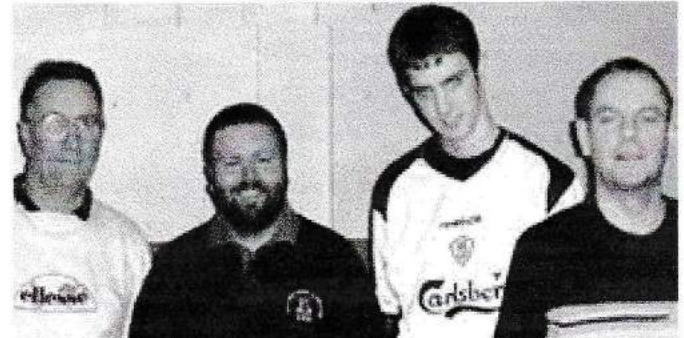
Wavertree Labour 'B' - Ken Roberts, John Gratton, Peter Howden and Gordon Langshaw



Wavertree Labour 'C' - Colin Fyldes, Tony Connor, Dave Williams and Mike Ashton



Wavertree Labour 'D' - Ken Armson, Stan Clarke, Reg Mirdamadi, Paul Banks and Ken Ray



Wavertree Labour 'E' - Eric Spencer, Steve Perry, Anthony Mitchell and Dave Foulis



Police 'C' - Richie Winckle, Tony Harris, Paula French and Gareth Jones



Waterloo 'B' - Graham Black, Ro Craddock, Ian Lunt and Julie Prince





CADWA - Mike Mahoney, Rob Davies and Kevin Dolder



Bath St 'B' - Ian Grant, Eddie Crowley and Rob Peat



Maghull - Alan Jones, Fred Pheysey and Matt Wilson



Maghull 'A' - Eddie Preston, Tom Downing, George Frost and Harry McGanity



Maghull 'B' - Wilf Gibson, Brian Gegory, Phil Christie and Rod Bulmer



Maghull 'C' - Bill Salter, John Gillibrand, Denise Chorley and Naresh Tagor



Maghull 'D' - Jeff Banks, Andy McCourt, Janette Hutchings and Keith Whittaker



Manweb - Andy Lloyd, Ray Parkinson and Dave Harse



Manweb 'C' - Arthur Harrison, Alan Biggs, Peter Carney and John Ashley



Marconi - Trevor Owens, Bob Edwards and Paul Price





Police - John Rankin, Steve Gittins and John Dyson



Police 'B' - Gareth Jones, Gemma Lloyd and John Dyson



Waterloo - Ricky Brown, Ted Birch and Alan Chase



Waterloo 'A' - Richie Cragg, Nigel Stopher and Graeme Black



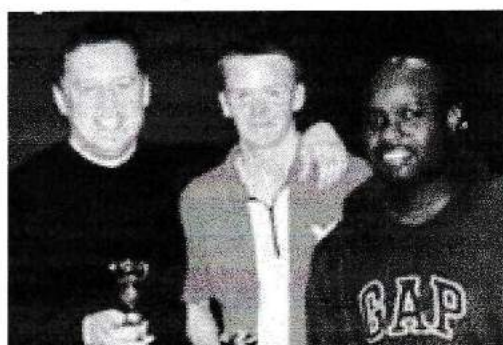
Wavertree Labour - Rob Wylie, Alice Howard and Dave Roberts



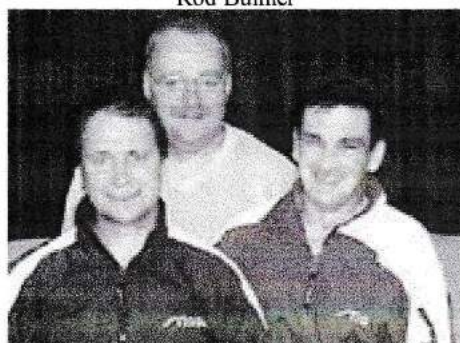
Wavertree Labour 'A' - Ian Black, Bill Stanley and Richie Jones



Maghull 'B' - Wilf Gibson, Brian Gregory, Phil Christie, and Rod Bulmer



Liverpool YMCA - Peter Lee, Paul O'Donnell and Deli Olyumbo



Liverpool Vets 2002 - Keith Williams, John Rankin and Mike Mahoney



Liverpool Juniors 1996 - Jay French, Lee Farley and Alan French



**Liverpool & District Table Tennis League 1926 - 2001**  
**75<sup>th</sup> Anniversary 'Roll of Honour'**

Ainsworth, Ken	Linacre	Jennings, Neil	Manweb, C.A.D.W.A.
Allen, Mick	Waterloo, Beauclair	Jennings, Paul	Manweb, C.A.D.W.A.
Armson, Ken MBE	Wavertree Labour	Jones, Alan	Maghull, English Electric
Bainbridge, Fred	Bath Street	Jones, Ken	Bohemians
Banton, Tom	Marconi, Plesseys	Jones, Moya	Bohemians
Batty, Dave	Bath Street	Jones, R.	Aigburth , Oakhill
Bell, Bobby	Marconi, Plesseys	Lacey, Frank	Linacre
Bellec, Mikael	Liverpool YMCA	Lambert, Jack	Waterloo, Eng Electric
Biggs, Alan	Manweb, Balfour	Langton, John	Bath Street
Birch, Gordon	Bohemians, CADWA	Leeson, Brian	Fairlawn, Colonsay
Birch, Ted	Waterloo, Beauclair	Lovelady, Joe	Orrell
Black, Ian	Wavertree Labour	Lovelady, Mira	Orrell, Rafters
Bulmer, Rod	Maghull, Wav. Labour	Mc Kim, John	Beauclair, Lpool Jewish
Buoey, Brenda	Bath Street	McCann, Frank	Marconi, English Electric
Burrows, Brian	Police	McCann, John	Marconi, Bath Street
Caird, Eric	Rafters, St Johns	McElwee, Ian	Bath Street
Cameron, Eddie	Victoria Park	McGanity, Harry	Maghull
Chase, Alan	Waterloo, Eng Electric	McLoughlin, Pat	Liverpool YMCA
Clarke, Stan	Maghull, Colonsay	Neary, Mabel	Wavertree Labour
Clayton, William	Bath Street	Oakes, Dave	Police
Connor, Tony	Wavertree Labour	Owens, Trevor	Marconi, Wav Labour
Crispin, Dave	Police	Percival, Wayne	Mossley Hill, Wav Labour
Cunningham, David	Bath Street	Pheysey, Fred	Maghull, English Electric
Davidson, Jack	Linacre	Power, Mike	C.A.D.W.A.
Davies, Don	C.A.D.W.A., Rafters	Proffitt, Bill	Fords
Davies, Rob	C.A.D.W.A., Rafters	Purcell, Tom	Police
Dyson, John	Police, Colonsay	Roberts, Peter	C.A.D.W.A.
Dyson, Len	Police	Rankin, John	Police
Edge, Tom	Crawfords	Reeve, Harry	Linacre
Edwards, Bob	Marconi, Plesseys	Reid, Alan	Waterloo
Every, Danny	Bootle YMCA	Reid, Graham	Fords
French, Paula	Police, Colonsay	Richards, Stuart	Colonsay
Garnett, Arthur	Police, Bootle YMCA	Rollinson, Graeme	Aigburth
Georgeson, Ron	Bath Street	Ross, Peter	Bath Street
Gilmour, Ted	Marconi, Wav Labour	Rumjahn, Peter	Clubmoor, Rafters
Gittins, Paul	Police, Vernon Sangster	Rumjahn, Ted	Clubmoor, Rafters
Gittins, Steve	Police, Colonsay	Smith, George	Liverpool YMCA
Gould, Alex	Bath Street	Taylor, A.T	Bath Street
Green, Ted	Marconi, Plesseys	Thornton, Russell	Liverpool YMCA
Gregory, Brian	Maghull	Townsend, Basil	
Harris, Bill	Balfour, Trinity	Upton, Arthur	Oakhill, Orrell
Harris, Tony	Police	Wass, Peter	Marconi, Aigburth
Harvey, Stan	Marconi, Victoria Park	Wensley, Ian	Marconi, Colonsay
Henshaw, John	Liverpool YMCA	Williams, Keith	C.A.D.W.A., Rafters
Higham, John	Bootle YMCA	Winckle, Richie	Police, Bohemians
Holmes, William	Aigburth, Linnets	Wood, Eric	Aigburth, Linnets
Hutchings, Paul	Police	Wright, George	Police, Oakhill
Hyde, Ken	Clubmoor	Wright, Roly	Bootle YMCA
		Youd, Eric	English Electric



# LIVERPOOL AND DISTRICT TABLE TENNIS LEAGUE

Founded 1926



<b>President:</b>	<b>A. E. Upton Esq.</b>
<b>Chairman :</b>	<b>D. W. Davies Esq.</b>
<b>Life Members :</b>	<b>J. McCaig Esq. E. Cameron Esq. J.A. Lambert Esq. A.E. Upton Esq. B.A. Leeson Esq. P. U. Rumjahn Esq. A. Gould Esq.</b>
<b>Vice Presidents :</b>	<b>K. Jones Esq. D. Foulis Esq. T. J. Edge Esq. E. Caird Esq. A. Wood Esq. B.S. Fawley Esq. L. Crone Esq. G.H.E. Birch Esq. Mrs L. Upton R. Hebson Esq. K.A. Armson Esq. MBE</b>
<b>Stamp Award of Merit :</b>	
<b>1958</b>	<b>J. H. C. Hughes Esq.</b>
<b>1960</b>	<b>J. C. McKim Esq.</b>
<b>1964</b>	<b>E. Cameron Esq.</b>
<b>1969</b>	<b>A. E. Upton Esq.</b>
<b>1982</b>	<b>J. A. Lambert Esq.</b>
<b>1989</b>	<b>S. D. Cameron Esq.</b>
<b>1993</b>	<b>B. A. Leeson Esq.</b>
<b>1997</b>	<b>K. A. Armson. Esq. M.B.E</b>
<b>1997</b>	<b>D. W. Davies Esq.</b>



# LIVERPOOL AND DISTRICT TABLE TENNIS LEAGUE

Founded 1926



## Liverpool Honours

### Norman Cook Memorial Trophy Winners

**1989, 1990, 1994, 1995, 1997, 1999, 2000, 2001, 2002**

### Lancashire and Cheshire Table Tennis League

#### **Division 1 Champions - Men**

**1988, 1989, 1996, 1997, 1998, 1999, 2000**

#### **Division 1 Champions - Ladies**

**1947, 1948, 1975, 1987, 1989, 1990, 1991, 1992, 1994,  
1996, 1997, 1998,**

**Premier Division Champions – Men 2001, 2002**

**Premier Division Champions – Ladies 1999, 2001, 2002**

**Premier Division Champions – Veterans 2001, 2002**

### Dennis Smith Memorial Trophy Winners

**1999, 2000, 2001**



	PRESIDENT	CHAIRMAN	SECRETARY	TREASURER	REGISTRAR / FIXTURE SECRETARY	MATCH SECRETARY
1926	W.J. LANCASHIRE	W.J. MILLER	L.E. FORREST	T.H. ROWLANDS		
1927	W.J. LANCASHIRE	W.J. MILLER	L.E. FORREST	L.E. FORREST		
1928	W.J. LANCASHIRE	W.J. MILLER	L.E. FORREST	H. CROPPER		
1929	W.J. LANCASHIRE	W.J. MILLER	L.E. FORREST	J. BARTHOLOMEW		J.P. PHOENIX
1930	W.J. LANCASHIRE	C.E. BARTHOLOMEW	L.E. FORREST	J. BARTHOLOMEW		A. DUMBELL
1931	W.J. LANCASHIRE	C.E. BARTHOLOMEW	J.A. SCHOFIELD	J. BARTHOLOMEW		A. DUMBELL
1932	W.J. LANCASHIRE	C.E. BARTHOLOMEW	J.M. STANLEY	J. GORFUNKLE		L. COLDRICK
1933	C.E. BARTHOLOMEW	T.G. BRANDRETH	L.E. FORREST	W.S. ROMAIN		F.R. MOORE
1934	C.E. BARTHOLOMEW	T.G. BRANDRETH	L.E. FORREST	W.S. ROMAIN		NONE
1935	C.E. BARTHOLOMEW	T.G. BRANDRETH	L.E. FORREST	W.S. ROMAIN		NONE
1936	C.E. BARTHOLOMEW	H.C. NICHOLLS	H.T. GRIFFITHS	W. STAMP	H.C. NICHOLLS	NONE
1937	C.E. BARTHOLOMEW	F. MICKLESFIELD	W. STAMP	W. STAMP	H. DANE	H. DANE
1938	C.E. BARTHOLOMEW	F. MICKLESFIELD	W. STAMP	W. STAMP	J. ALCOCK	J. ALCOCK
1939	C.E. BARTHOLOMEW	T.G. BRANDRETH	W. STAMP	W. STAMP	J. ALCOCK	J. ALCOCK
1940	C.E. BARTHOLOMEW	T.G. BRANDRETH	W. STAMP	W. STAMP	J. ALCOCK	J. ALCOCK
1941	C.E. BARTHOLOMEW	T.G. BRANDRETH	W. STAMP	W. STAMP	S. ALCOCK	J. ALCOCK
1942	C.E. BARTHOLOMEW	T.G. BRANDRETH	W. STAMP	W. STAMP	S. ALCOCK	J. ALCOCK
1943	C.E. BARTHOLOMEW	T.G. BRANDRETH	W. STAMP	W. STAMP	NONE	NONE
1944	C.E. BARTHOLOMEW	T.G. BRANDRETH	W. STAMP	W. STAMP	NONE	NONE
1945	C.E. BARTHOLOMEW	T.G. BRANDRETH	W. STAMP	W. STAMP	NONE	NONE
1946	C.E. BARTHOLOMEW	T.G. BRANDRETH	W. STAMP	W. STAMP	F.R. MOORE	F.R. MOORE
1947	C.E. BARTHOLOMEW	D. FOULIS	W. STAMP	W. STAMP	F.R. MOORE	F.J. FARRELL
1948	C.E. BARTHOLOMEW	D. FOULIS	W. STAMP	W. STAMP	F.R. MOORE	F.J. FARRELL
1949	C.E. BARTHOLOMEW	D. FOULIS	W. STAMP	W. STAMP	F.R. MOORE	F.J. FARRELL
1950	C.E. BARTHOLOMEW	D. FOULIS	W. STAMP	W. STAMP	F.R. MOORE	F.J. FARRELL
1951	C.E. BARTHOLOMEW	D. FOULIS	W. STAMP	W. STAMP	G. WILLIAMS	F.J. FARRELL
1952	C.E. BARTHOLOMEW	D. FOULIS	W. STAMP	W. STAMP	G. WILLIAMS	F.J. FARRELL
1953	C.E. BARTHOLOMEW	D. FOULIS	W. STAMP	W. STAMP	G. WILLIAMS	F.J. FARRELL
1954	C.E. BARTHOLOMEW	J.H.C. HUGHES	W. STAMP	W. STAMP	G. WILLIAMS	R. HETHERINGTON
1955	C.E. BARTHOLOMEW	J.H.C. HUGHES	W. STAMP	W. STAMP	E. CAMERON	C.W. MANNING
1956	C.E. BARTHOLOMEW	J.H.C. HUGHES	W. STAMP	W. STAMP	E. CAMERON	J.D. LOUGHREY
1957	C.E. BARTHOLOMEW	J.H.C. HUGHES	W. STAMP	W. STAMP	E. CAMERON	J. MCCAIG
1958	C.E. BARTHOLOMEW	A.E. UPTON	J.C. MCKIM	S.D. CAMERON	E. CAMERON	J. MCCAIG
1959	C.E. BARTHOLOMEW	A.E. UPTON	J.C. MCKIM	S.D. CAMERON	E. CAMERON	J. MCCAIG
1960	C.E. BARTHOLOMEW	A.E. UPTON	J.C. MCKIM	S.D. CAMERON	E. CAMERON	J. MCCAIG
1961	J.K. HYDE	A.E. UPTON	J.C. MCKIM	S.D. CAMERON	E. CAMERON	J. MCCAIG
1962	J.K. HYDE	A.E. UPTON	J.C. MCKIM	S.D. CAMERON	E. CAMERON	J. MCCAIG
1963	J.K. HYDE	A.E. UPTON	J.C. MCKIM	S.D. CAMERON	E. CAMERON	J. MCCAIG



1964	J.K. HYDE	A.E. UPTON	J.C. McKIM	S.D. CAMERON	E. CAMERON	J. MCCAIG
1965	J.K. HYDE	A.E. UPTON	J.C. McKIM	S.D. CAMERON	E. CAMERON	J. MCCAIG
1966	J.K. HYDE	A.E. UPTON	J.C. McKIM	S.D. CAMERON	E. CAMERON	J.R. GREEN
1967	J.K. HYDE	A.E. UPTON	J.C. McKIM	S.D. CAMERON	E. CAMERON	J.R. GREEN
1968	J.K. HYDE	A.E. UPTON	J.C. McKIM	S.D. CAMERON	E. CAMERON	J.R. GREEN
1969	J.K. HYDE	A.E. UPTON	J.C. McKIM	S.D. CAMERON	E. CAMERON	J.R. GREEN
1970	J.K. HYDE	A.E. UPTON	J.C. McKIM	S.D. CAMERON	E. CAMERON	J.R. GREEN
1971	J.K. HYDE	A.E. UPTON	J.C. McKIM	S.D. CAMERON	E. CAMERON	A. DAVIDSON
1972	J.K. HYDE	A.E. UPTON	J.C. McKIM	S.D. CAMERON	E. CAMERON	A. DAVIDSON
1973	J.K. HYDE	A.E. UPTON	J.C. McKIM	S.D. CAMERON	E. CAMERON	A. DAVIDSON
1974	J.K. HYDE	A.E. UPTON	J.C. McKIM	S.D. CAMERON	E. CAMERON	D.W. DAVIES
1975	J.K. HYDE	A.E. UPTON	J.C. McKIM	S.D. CAMERON	E. CAMERON	D.W. DAVIES
1976	J.K. HYDE	A.E. UPTON	J.C. McKIM	S.D. CAMERON	E. CAMERON	D.W. DAVIES
1977	J.K. HYDE	A.E. UPTON	J.C. McKIM	S.D. CAMERON	E. CAMERON	D.W. DAVIES
1978	J.K. HYDE	A.E. UPTON	J.C. McKIM	S.D. CAMERON	E. CAMERON	D.W. DAVIES
1979	J.K. HYDE	A.E. UPTON	J.C. McKIM	S.D. CAMERON	E. CAMERON	D.W. DAVIES
1980	J.K. HYDE	A.E. UPTON	J.C. McKIM	S.D. CAMERON	E. CAMERON	D.W. DAVIES
1981	J.K. HYDE	A.E. UPTON	J.C. McKIM	S.D. CAMERON	E. CAMERON	D.W. DAVIES
1982	J.K. HYDE	A.E. UPTON	J.C. McKIM	S.D. CAMERON	E. CAMERON	D.W. DAVIES
1983	J.K. HYDE	A.E. UPTON	J.C. McKIM	S.D. CAMERON	E. CAMERON	D.W. DAVIES
1984	J.K. HYDE	A.E. UPTON	J.C. McKIM	S.D. CAMERON	E. CAMERON	D.W. DAVIES
1985	J.K. HYDE	A.E. UPTON	J.C. McKIM	S.D. CAMERON	E. CAMERON	D.W. DAVIES
1986	J.K. HYDE	A.E. UPTON	J.C. McKIM	S.D. CAMERON	E. CAMERON	D.W. DAVIES
1987	J.K. HYDE	A.E. UPTON	J.C. McKIM	S.D. CAMERON	E. CAMERON	D.W. DAVIES
1988	J.K. HYDE	A.E. UPTON	J.C. McKIM	S.D. CAMERON	E. CAMERON	D.W. DAVIES
1989	J.K. HYDE	A.E. UPTON	J.C. McKIM	W. SALTER	E. CAMERON	D.W. DAVIES
1990	J.K. HYDE	A.E. UPTON	J.C. McKIM	W. SALTER	E. CAMERON	D.W. DAVIES
1991	A.E. UPTON	A.E. UPTON	J.C. McKIM	W. SALTER	E. CAMERON	D.W. DAVIES
1992	A.E. UPTON	A.E. UPTON	J.C. McKIM	W. SALTER	E. CAMERON	D.W. DAVIES
1993	A.E. UPTON	A.E. UPTON	J.C. McKIM	W. SALTER	E. CAMERON	D.W. DAVIES
1994	A.E. UPTON	A.E. UPTON	J.C. McKIM	W. SALTER	Ms P. FRENCH	D.W. DAVIES
1995	A.E. UPTON	A.E. UPTON	A.J. HARRIS	W. SALTER	Ms P. FRENCH	D.W. DAVIES
1996	A.E. UPTON	A.E. UPTON	A.J. HARRIS	A. GARNETT	Ms P. FRENCH	D.W. DAVIES
1997	A.E. UPTON	A.E. UPTON	A.J. HARRIS	A. GARNETT	Ms P. FRENCH	D.W. DAVIES
1998	A.E. UPTON	S. CLARKE	A.J. HARRIS	A. GARNETT	Ms P. FRENCH	D.W. DAVIES
1999	A.E. UPTON	D.W. DAVIES	M.E. POWER	A. GARNETT	Ms P. FRENCH	D.W. DAVIES
2000	A.E. UPTON	D.W. DAVIES	M.E. POWER	A. GARNETT	Ms P. FRENCH	D.W. DAVIES
2001	A.E. UPTON	D.W. DAVIES	M.E. POWER	A. GARNETT	Ms P. FRENCH	D.W. DAVIES



YEAR	WOMEN'S SINGLES		LIVERPOOL		CLOSED		CHAMPIONSHIPS		RESTRICTED SINGLES	
	MEN'S SINGLES	WOMEN'S SINGLES	MEN'S DOUBLES	WOMEN'S DOUBLES	MIXED DOUBLES	JUNIOR BOYS' SINGLES	JUNIOR GIRLS' SINGLES	VETERAN SINGLES		
1926/27	J.R. BATHER									
1927/28	NOT HELD									
1928/29	D. FOULIS	A.M. POLLITT	D. FOULIS / T. ROTHERAM							
1929/30	D. FOULIS	A.M. POLLITT	D. FOULIS / T. ROTHERAM							
1930/31	D. FOULIS	A.M. POLLITT	D. FOULIS / G.H. READMAN							
1931/32	D. FOULIS	J. BARTHLOMEW	D. FOULIS / T. ROTHERAM	J.BARTHLOMEW /A.M. POLLITT						
1932/33	J.K. HYDE	N. NORRISH	E. HYDE / J.K. HYDE	J.BARTHLOMEW /N. NORRISH						
1933/34	D. FOULIS	N. NORRISH	F.F. MOSSOP / L.J. WHITBY	J.BARTHLOMEW /N. NORRISH					H. KNIGHT	
1934/35	F. BAMFORD	N. NORRISH	D. CLASS / R.E. ROBERTS	J.BARTHLOMEW /N. NORRISH	L. BERMAN / J. BARTHLOMEW				J. LEECE	
1935/36	F. BAMFORD	N. NORRISH	F. BAMFORD / D. FOULIS	J.BARTHLOMEW /N. NORRISH	P.U. RUMJAHN / E. MALLEY				J. LEECE	
1936/37	E. HYDE	I. POLLITT	J.K. HYDE / E.W. HYDE	R. DOOLAN / M.J. CORDNER	P.U. RUMJAHN / E. MALLEY					
1937/38	J.K. HYDE	R. DOOLAN	F. BAMFORD / J.K. HYDE	MRS LLOYD / N. NORRISH	P.U. RUMJAHN / E. MALLEY					
1938/39	P.U. RUMJAHN	E. MALLEY	J.K. HYDE / F. BAMFORD	N. NORRISH	P.U. RUMJAHN / E. MALLEY					
1939/40	NOT HELD									
1940/41	H.H. BEST		H.H. BEST / A.J. BEST							
1941/42	R.M. RUMJAHN		R.M. RUMJAHN / J. RICHARDSON							
1942/43	R.M. RUMJAHN		H. KNIBBS / R.M. RUMJAHN							
1943/44	R.M. RUMJAHN	O. DICKENSON	N.G. SUMNER / R. COURTNEY							
1944/45	R.M. RUMJAHN	B. OWENS	R.M. RUMJAHN / E. WALL	M. ALCOCK / O. DICKENSON	R.M. RUMJAHN / K. MAY				J. CRISPIN *	
1945/46	R.M. RUMJAHN	E. MANSELL	J. McCAIG / A SIMPSON	B. OWEN / L. ROBINSON	R. ROBERTS / O. DICKENSON				S. ROYDEN *	
1946/47	R.M. RUMJAHN	E. MANSELL	P.U. RUMJAHN / E.J. RUMJAHN	E. MANSELL / A. KENNY	P.U. RUMJAHN / L. MAY				B. HAND *	
1947/48	E.J. RUMJAHN	K. MAY	P.U. RUMJAHN / E.J. RUMJAHN	K. MAY / L. MAY	P.U. RUMJAHN / L. MAY				W.H. PIERCE	
1948/49	R.M. RUMJAHN	O. DICKENSON	P.U. RUMJAHN / E.J. RUMJAHN	K. MAY / L. MAY	R.M. RUMJAHN / K. MAY				W.H. PIERCE *	
1949/50	R.M. RUMJAHN	E. MANSELL	P.U. RUMJAHN / E.J. RUMJAHN	K. MAY / L. MAY	P.U. RUMJAHN / L. MAY				N.R. JONES *	
1950/51	E.J. RUMJAHN	A. JONES	F. BAMFORD / R. ROBERTS	E. MANSELL / O. DICKENSON	R.M. RUMJAHN / K. MAY				G. HALL *	
1951/52	R.M. RUMJAHN	A. JONES	R.M. RUMJAHN / V.D. CHESHAM	E. MANSELL / O. DICKENSON	R.M. RUMJAHN / L. MAY				A.C. TAYLOR *	
1952/53	B. HAND	E. MANSELL	R.M. RUMJAHN / V.D. CHESHAM	K. CASSELMAN / L. MAY	R.M. RUMJAHN / K. MAY				D. RIGBY *	



YEAR	MEN'S SINGLES		WOMEN'S SINGLES		LIVERPOOL		CLOSED		CHAMPIONSHIPS		JUNIOR GIRL'S SINGLES		VETERAN SINGLES		RESTRICTED SINGLES		
	MEN'S DOUBLES	WOMEN'S DOUBLES	MEN'S DOUBLES	WOMEN'S DOUBLES	MIXED DOUBLES	JUNIOR BOYS SINGLES	JUNIOR BOYS SINGLES	MIXED DOUBLES	JUNIOR BOYS SINGLES	JUNIOR BOYS SINGLES	JUNIOR GIRL'S SINGLES	VETERAN SINGLES	RESTRICTED SINGLES				
1953/54	R.M. RUMJAHN / RUMJAHN	E. MANSELL	R.M. RUMJAHN / V.D. CHESHAM	E. MANSELL / O. DICKENSON	MR & MRS R.M. RUMJAHN	F. CUFF *											
1954/55	L. DAVIES	E. MANSELL	R. HETHERINGTON / W. HARRIS	M. WILLCOX / M. JONES	B. HAND / M. JONES	I. ROGERSON *											
1955/56	A.C. TAYLOR	B. WATERSON	R.M. RUMJAHN / P.U. RUMJAHN	M. JONES / M. WILLCOX	B. HAND / M. JONES	J. STODDART *											
1956/57	E.J. RUMJAHN	K. CASSELMAN	A.C. TAYLOR / E.J. RUMJAHN	K. CASSELMAN / L. RUMJAHN	M. JONES	D. BUTTERWORTH H *											
1957/58	A.C. TAYLOR	M. JONES	A.C. TAYLOR / R.M. RUMJAHN	K. CASSELMAN / L. RUMJAHN	A.C. TAYLOR / B. HARDACRE	R. GUNNION *											
1958/59	A.C. TAYLOR	R. ROYLE	R. HETHERINGTON / P.U. RUMJAHN	L. RUMJAHN / J. RANDALL	V. CHESHAM / J. ROBERTS	R. EDEN *							R. HETHERINGTON				
1959/60	A.C. TAYLOR	M. JONES	E. DAVIES / W. PIERCE	M. JONES / J. ROBERTS	MR & MRS A.C. TAYLOR	J. BALL *							L. DAVIES				
1960/61	R. GUNNION	M. JONES	W. PIERCE / E. DAVIES	M. WILLCOX / M. JONES	R. GUNNION / M. JONES	R.W. SMITH *							H.G. SPIERS				
1961/62	R. GUNNION	J. CRAFT	R.M. RUMJAHN / A.C. TAYLOR	E. MANSELL / J. CRAFT	R. GUNNION / M. JONES	M. COOPER *							E. J. RUMJAHN				
1962/63	W. ALLANSON	R. ROYLE	P.E. D'ARCY / F.A. THOMAS	I. CRAFT / P. LAWRENSON	P. E. D'ARCY / M. WILLCOX	G. BIRCH *							P.U. RUMJAHN				
1963/64	R. GUNNION	J. CRAFT	G. COOKLIN / E. BRISCOE	M. FRANCIS / J. CRAFT	R. GUNNION / J. CRAFT	B. CAIN *							H. SPIERS			G. PLATT	
1964/65	J.K. ROBERTS	B. CAIN	G. BIRCH / P.E. D'ARCY	J. RANDALL / B. CAIN	F.A. THOMAS / J. CRAFT	G. BIRCH *							V.D. CHESHAM			L.B. CARTER	
1965/66	R. JONES	J. CRAFT	G. BIRCH / P.E. D'ARCY	J. CRAFT / M. COE	F.A. THOMAS / J. CRAFT	I. BURROWS *							V.D. CHESHAM			T. ROBERTS	
1966/67	G. BIRCH	J. CRAFT	G. BIRCH / P.E. D'ARCY	J. RANDALL / B. CAIN	P.E. D'ARCY / B. CAIN	A. MITCHELL *							V.D. CHESHAM			M. FRANCIS	
1967/68	G. BIRCH	B. CAIN	G. BIRCH / P.E. D'ARCY	J. RANDALL / B. CAIN	G. BIRCH / J. CRAFT	F. BAILY							V.D. CHESHAM			D. SAYLE	
1968/69	P. D'ARCY	B. CAIN	P. D'ARCY / E. YOUTH	J. RANDALL / B. CAIN	P. E. D'ARCY / B. CAIN	J. BARTON							V.D. CHESHAM			K. FITZSIMMONS	
1969/70	B. PARKINSON	M. FRANCIS	G. SMITH / B. PARKINSON	K. PEMBERTON / V. LEE	P. E. D'ARCY / J. RUMJAHN	J. BARTON							E. MANDALUF			E. OWENS	
1970/71	D. COTTERELL	S. MANNING	P. E. D'ARCY / J. McNEE	S. MANNING / B. WILLIAMS	L. BARCLAY / B. WILLIAMS	J. McNEE *							E. MANDALUF			P. TSANG	
1971/72	M. JOHNS	B. WILLIAMS	P.E. D'ARCY / A. CLAYTON	B. KIRKMAN / S. MANNING	A. CLAYTON / S. MANNING	B. JOHNS *							E. MANDALUF			B. WILLIAMS	
1972/73	W. ALLANSON	B. WILLIAMS	W. ALLANSON / A. CLAYTON	B. KIRKMAN / S. MANNING	I. JOHNS / B. WILLIAMS	J. McNEE							G. SMITH			T. KILLIP	
1973/4	J. McNEE	B. WILLIAMS	J. MARSHALL / J. McNEE	J. BLACK / B. WILLIAMS	J. BLACK / B. WILLIAMS	N. ROBERTS							G. SMITH			G. BRADLEY	
1974/75	J. McNEE	B. KIRKMAN	J. MARSHALL / J. McNEE	M. COX / B. KIRKMAN	M. COX / B. KIRKMAN	K. WILLIAMS							G. SMITH			D. CRISPIN	
1975/76	P. TSANG	B. KIRKMAN	P. TSANG / P. LEE	P. BREITHAUP / J. TURNER	P. BREITHAUP / S. ALEXANDER	A. O'CONNOR							G. SMITH			P. LUXON	
1976/77	K. WILLIAMS	S. ALEXANDER	K. WILLIAMS / DAVY	P. BREITHAUP / S. ALEXANDER	P. BREITHAUP / S. ALEXANDER	G. BLACK							T. KILLIP			J. CUMMINGS	
1977/78	M. THOMAS	S. ALEXANDER	M. THOMAS / POWELL	B. KIRKMAN / S. ALEXANDER	B. KIRKMAN / S. ALEXANDER	M. THOMAS							D. FERGUSON			S. WALMSLEY	
1978/79	W. PERCIVAL	L. FENNAH															
1979/80	K. WILLIAMS	H. STIRRUP	K. WILLIAMS / H. STIRRUP	H. STIRRUP / H. STIRRUP	H. STIRRUP / H. STIRRUP	P. GITTINS							J. EVANS			A. CHASE	



YEAR	WOMEN'S SINGLES		LIVERPOOL		CLOSED		CHAMPIONSHIPS		VETERAN		RESTRICTED	
	MEN'S SINGLES	WOMEN'S SINGLES	MEN'S DOUBLES	WOMEN'S DOUBLES	MIXED DOUBLES	JUNIOR BOYS' SINGLES	JUNIOR GIRLS' SINGLES	VETERAN SINGLES	RESTRICTED SINGLES			
1980/81	K. WILLIAMS	L. FENNAH	B. DAVEY	Y. COX								
1981/82	W. PERCIVAL	J. PRINCE	P. HUTCHINGS/ J. RANKIN	J. PRINCE/ S. HUGHES		M. MERCER		F. PHEYSEY	L. KENWRIGHT			
1982/83	T. MANNING	B. BOUEY										
1983/84	D. ROBERTS	J. PRINCE						A. TIMEWELL				
1984/85	K. WILLIAMS	P. FRENCH						A. TIMEWELL				
1985/86	P. HUTCHINGS	C. HEMMING						A. TIMEWELL	A. CLARKE			
1986/87	W. PERCIVAL	M. NEARY	W. PERCIVAL / L. KENWRIGHT	P. FRENCH / B. BOUEY		R. LOWE *		A. CHASE	F. BRADY			
1987/88	S. RICHARDS	J. THOMAS	K. WILLIAMS/ L. KENWRIGHT					R. SMITH				
1988/89	A. EDEN	J. THOMAS	P. LEE/ M. MAHONEY	J. THOMAS/ D. CONROY		A. EDEN *		A. TIMEWELL	F. BRADY			
1989/90	K. WILLIAMS	B. KIRKMAN	P. HUTCHINGS / M. McEVROY		K. WILLIAMS / P. FRENCH	R. BEATTIE *		A. TIMEWELL	S. FAY			
1990/91	K. WILLIAMS	J. THOMAS	K. WILLIAMS / M. McEVROY		R. LOWE / J. THOMAS	R. BEATTIE *		A. TIMEWELL	R. BEATTIE			
1991/92	M. DICK	D. CONROY	P. HUTCHINGS / M. DICK *		M. McEVROY / D. CONROY	M. NEWS *		D. ROBERTS	K. DOLDER			
1992/93	P. FLINT	N. WILLIAMS	P. FLINT / CONNOR *			K. DOLDER *		D. ROBERTS				
1993/94	K. DOLDER	NO EVENT	D. ROBERTS / B. WENTWORTH *			K. DOLDER *		D. ROBERTS				
1994/95	K. DOLDER	P. FRENCH	D. ROBERTS / B. WENTWORTH *			L. FARLEY *		P. LEE				
1995/96	K. WILLIAMS	C. NEWNS	K. WILLIAMS / K. DOLDER *			L. FARLEY *		P. LEE				
1996/97	K. DOLDER	C. NEWNS	K. WILLIAMS/ M. MAHONEY *			L. FARLEY *		R. SMITH				
1997/98	K. DOLDER	P. FRENCH	P. HUTCHINGS / J. RANKIN *			J. COYSH *		P. LEE				
1998/99	K. WILLIAMS	P. FRENCH										
1999/00	A. ROBERTSON	A. HOWARD	K. DOLDER / P. MUSGROVE			C. GRAHAM *		K. WILLIAMS				
2000/01	K. DOLDER	A. HOWARD	P. HUTCHINGS / J. RANKIN			P. O'DONNELL		K. JACKSON				
			* Open Doubles			* Open Junior Singles						







MERSYSIDE OPEN CHAMPIONSHIPS																													
1929	1930	1931	1932	1933	1934	1935	1936	1937	1938	1939-1944	1945	1946	1947	1948	1949	1950	1951	1952	1953	1954	1955	1956	1957	1958	1959	1960	1961	1962	1963
MEN'S SINGLES		WOMEN'S SINGLES		MEN'S DOUBLES		WOMEN'S DOUBLES		MIXED DOUBLES		JUNIOR BOYS' SINGLES		JUNIOR GIRLS' SINGLES		VETERAN'S SINGLES															
S. PROFFIT		A. POLLITT		H.C. COOKE / L.D. TODD		J. BARTHOLOMEW / A. POLLITT		D. FOULIS / J. BARTHOLOMEW		C. BOLTON		D.A. MILLER		W.B. FITZPATRICK															
	NO COMPETITION		A. POLLITT		H.C. COOKE / D. FOULIS		J. BARTHOLOMEW / A. POLLITT		D. FOULIS / J. BARTHOLOMEW		C. BOLTON		D.A. MILLER		W.B. FITZPATRICK														
	I. SCHATOW		A. POLLITT		H.C. COOKE / D. FOULIS		J. BARTHOLOMEW / A. POLLITT		D. FOULIS / J. BARTHOLOMEW		C. BOLTON		D.A. MILLER		W.B. FITZPATRICK														
	G.V. BARNA		MR. SCOTT-HALL		G.V. BARNA / M. HAGUENAUER		J. BARTHOLOMEW / A. POLLITT		D. FOULIS / J. BARTHOLOMEW		C. BOLTON		D.A. MILLER		W.B. FITZPATRICK														
	A.D. BROOK		N. WOOD		A.D. BROOK / C.A.V. COLLING		J. BARTHOLOMEW / D. ROBERTS		C.A.V. COLLING / N. WOOD		C. BOLTON		D.A. MILLER		W.B. FITZPATRICK														
	J.K. HYDE		M. OSBORNE		J.K. HYDE / E. HYDE		J. BARTHOLOMEW / N. NORRISH		L. BERTMAN		C. BOLTON		D.A. MILLER		W.B. FITZPATRICK														
	G.V. BARNA		M. OSBORNE		G.V. BARNA / M. SZABADOS		M. OSBORNE / P. MOSS		L. BELLAK / N. NORRISH		C. BOLTON		D.A. MILLER		W.B. FITZPATRICK														
	J.K. HYDE		M. OSBORNE		S. PROFFIT / E.J. FILBY		R. DOOLAN / N. NORRISH		K. STANLEY		C. BOLTON		D.A. MILLER		W.B. FITZPATRICK														
	G.V. BARNA		L.I. BOOKER		G.V. BARNA / E.J. FILBY		MRS BOOKER / MRS HUTCHINGS		K. STANLEY		C. BOLTON		D.A. MILLER		W.B. FITZPATRICK														
	R. BERGMAN		D. STEAD		J.K. HYDE / R. BERGMAN		N. NORRISH / E. MALLEY		K. STANLEY		C. BOLTON		D.A. MILLER		W.B. FITZPATRICK														
	NOT HELD								K. STANLEY		C. BOLTON		D.A. MILLER		W.B. FITZPATRICK														
	J. LEACH		C. MILES		J.H. CARRINGTON / J. LEACH		P. BARNES / P. FRANKS		J. LEACH / I. LENTLE		C. BOLTON		D.A. MILLER		W.B. FITZPATRICK														
	G.V. BARNA		E.M. BLACKBURN		G.V. BARNA / A.A. HAYDEN		H. ELLIOT / L.R. BARNES		J. LEACH / E.M. BLACKBURN		C. BOLTON		D.A. MILLER		W.B. FITZPATRICK														
	R. BERGMAN		H. ELLIOT		G. MITTON / C. WHITELEY		N. SENIOR / M.I. LIGHTFOOT		L. COHEN / A. WOOD		C. BOLTON		D.A. MILLER		W.B. FITZPATRICK														
	G.V. BARNA		H. ELLIOT		J. LEACH / J.H. CARRINGTON		H. ELLIOT / L.R. BARNES		A.W. SIMMONS / H. ELLIOT		C. BOLTON		D.A. MILLER		W.B. FITZPATRICK														
	J. LEACH		P. FRANKS		B. GRIVE / A.W. SIMMONS		M. FRY / E. WEAVER		J. LEACH / P. FRANKS		C. BOLTON		D.A. MILLER		W.B. FITZPATRICK														
	J. LEACH		A. BATES		J. LEACH / M. HAGUENAR		B. GREY / V. ROWE		P. FRANKS		C. BOLTON		D.A. MILLER		W.B. FITZPATRICK														
	NOT HELD								A.W. SIMMONS / B. GREY		C. BOLTON		D.A. MILLER		W.B. FITZPATRICK														
	R. BERGMAN		B. GREY		R. BERGMAN / A.W. SIMMONS		C.K. BEST / A. PETTIFER		A.W. SIMMONS / B. GREY		C. BOLTON		D.A. MILLER		W.B. FITZPATRICK														
	J.A. LEACH		H. ELLIOT		B. KENNEDY / A.W. SIMMONS		C.K. BEST / A. HAYDEN		A.W. SIMMONS / H. ELLIOT		C. BOLTON		D.A. MILLER		W.B. FITZPATRICK														
	B. KENNEDY		H. ELLIOT		B. KENNEDY / A.W. SIMMONS		C.K. BEST / A. HAYDEN		A.W. SIMMONS / H. ELLIOT		C. BOLTON		D.A. MILLER		W.B. FITZPATRICK														
	NOT HELD								H. ELLIOT		C. BOLTON		D.A. MILLER		W.B. FITZPATRICK														
	NOT HELD								H. ELLIOT		C. BOLTON		D.A. MILLER		W.B. FITZPATRICK														
	G. MURANYI		A. HAYDEN		G. MURANYI / I. SOMAGYI		A. HAYDEN / P. MORTIMER		I. SOMAGYI / A. HAYDEN		C. BOLTON		D.A. MILLER		W.B. FITZPATRICK														
	B. KENNEDY		L. BROWN		M. SIMPSON / G. UNDERWOOD		D. WILKINSON / C. SPENCER		F. KERSHAW / I. HANEY		C. BOLTON		D.A. MILLER		W.B. FITZPATRICK														
	L. LANDRY		P. MORTIMER		G. MURANYI / S. SOMAGYI		B. BIRD / P. MORTIMER		L. LANDRY / B. BIRD		C. BOLTON		D.A. MILLER		W.B. FITZPATRICK														
	J. CLAYTON		P. MORTON		T. DENSHAM / L. LANDRY		D.B. GRIFFITHS / P. MORTIMER		T. DENSHAM / P. MORTIMER		C. BOLTON		D.A. MILLER		W.B. FITZPATRICK														
	J. CLAYTON		M. SHANNAN		A. LINDSAY / B.D. WRIGHT		M. SHANNON / A. TAFT		B.D. WRIGHT / M. SHANNAN		C. BOLTON		D.A. MILLER		W.B. FITZPATRICK														
	B.D. WRIGHT		I. KERSHAW		M. DAINTY / A.R. TOMLINSON		D. FITZGERALD / C. MOORE		R. ALLCOCK / C. MOORE		C. BOLTON		D.A. MILLER		W.B. FITZPATRICK														
	M. SYMMONDS		J. CANHAM		M. BILLINGHAM / M. SYMMONDS		L. PROUDLOCK		M. SYMMONDS / L. PROUDLOCK		C. BOLTON		D.A. MILLER		W.B. FITZPATRICK														



YEAR	LIVERPOOL		CLOSED		CHAMPIONSHIPS			RESTRICTED SINGLES	
	MEN'S SINGLES	WOMEN'S SINGLES	MEN'S DOUBLES	WOMEN'S DOUBLES	MIXED DOUBLES	JUNIOR BOY'S SINGLES	JUNIOR GIRL'S SINGLES		VETERAN SINGLES
1979/80	K. WILLIAMS	H. STIRRUP	K. WILLIAMS / B. DAVEY	H. STIRRUP / Y. COX		P. GITTINS	H. STIRRUP	J. EVANS	A. CHASE
1980/81	K. WILLIAMS	L. FENNAH							
1981/82	W. PERCIVAL	J. PRINCE	P. HUTCHINGS / J. RANKIN	J. PRINCE / S. HUGHES		M. MERCER		F. PHEYSEY	L. KENWRIGHT
1982/83	T. MANNING	B. BOUEY							
1983/84	D. ROBERTS	J. PRINCE						A. TIMEWELL	
1984/85	K. WILLIAMS	P. FRENCH						A. TIMEWELL	
1985/86	P. HUTCHINGS	C. HEMMING						A. TIMEWELL	A. CLARKE
1986/87	W. PERCIVAL	M. NEARY	W. PERCIVAL / L. KENWRIGHT	P. FRENCH / B. BOUEY		R. LOWE *		A. CHASE	F. BRADY
1987/88	S. RICHARDS	J. THOMAS	K. WILLIAMS / L. KENWRIGHT					R. SMITH	
1988/89	A. EDEN	J. THOMAS	P. LEE / M. MAHONEY	J. THOMAS / D. CONROY		A. EDEN *		A. TIMEWELL	F. BRADY
1989/90	K. WILLIAMS	B. KIRKMAN	P. HUTCHINGS / M. McEVROY		K. WILLIAMS / P. FRENCH	R. BEATTIE *		A. TIMEWELL	S. FAY
1990/91	K. WILLIAMS	J. THOMAS	K. WILLIAMS / M. McEVROY		R. LOWE / J. THOMAS	R. BEATTIE *		A. TIMEWELL	R. BEATTIE
1991/92	M. DICK	D. CONROY	P. HUTCHINGS / M. DICK *		M. McEVROY / D. CONROY	M. NEWNS *		D. ROBERTS	K. DOLDER
1992/93	P. FLINT	N. WILLIAMS	P. FLINT / CONNOR *			K. DOLDER *		D. ROBERTS	
1993/94	K. DOLDER	NO EVENT	D. ROBERTS / B. WENTWORTH *			K. DOLDER *		D. ROBERTS	
1994/95	K. DOLDER	P. FRENCH	D. ROBERTS / B. WENTWORTH *			L. FARLEY *		P. LEE	
1995 / 96	K. WILLIAMS	C. NEWNS	K. WILLIAMS / K. DOLDER *			L. FARLEY *		P. LEE	
1996 / 97	K. DOLDER	C. NEWNS	K. WILLIAMS / M. MAHONEY *			L. FARLEY *		R. SMITH	
1997 / 98	K. DOLDER	P. FRENCH	P. HUTCHINGS / J. RANKIN *			J. COYSH *		P. LEE	
1998 / 99	K. WILLIAMS	P. FRENCH							
1999 / 00	A. ROBERTSON	A. HOWARD	K. DOLDER / P. MUSGROVE						
2000 / 01	K. DOLDER	A. HOWARD	P. HUTCHINGS / J. RANKIN			P. O'DONNELL			
2001/02			* Open Doubles			* Open Junior Singles			

*P. O'Donnell*  
*K. Williams*  
*K. Jackson*



YEAR	LEAGUE CHAMPIONS	G.H. READMAN CUP WINNERS	WOMENS DIVISION CHAMPIONS	J. RUMBAIN CUP WINNERS	FRANK MURPHY CUP	G.B. HYDE CUP WINNERS	BARTHOLOMEW CUP WINNERS	W. STAMP CUP WINNERS	E.L. FORREST CUP WINNERS
1926 / 27	HATTON	K.O. B1		K.O. 2nd	VAT H/CAP	K.O. Div 3		K.O. Div 5	K.O. Div 4
1927 / 28	HATTON								
1928 / 29	HATTON								
1929 / 30	HATTON								
1930 / 31	GROVE HOUSE								
1931 / 32	LUCEM	ROYAL LIVER							
1932 / 33	CITY	CITY							
1933 / 34	CITY	CITY							
1934 / 35	CITY	CITY							
1935 / 36	ENNISMORE	ENNISMORE							
1936 / 37	CLUBMOOR	CLUBMOOR							
1937 / 38	CLUBMOOR	CLUBMOOR							
1938 / 39	OAKHILL	CLUBMOOR							
1939 / 40									
1940 / 41	PENNANT								
1941 / 42	PENNANT								
1942 / 43	GREAT CROSBY								
1943 / 44	B'HEAD C.D.								
1944 / 45	GREAT CROSBY	ROFTEN							
1945 / 46	HUYTON	GT CROSBY	EAST WAVERTREE						
1946 / 47	B'HEAD YMCA	BALFOUR	BALFOUR						
1947 / 48	BALFOUR	BALFOUR	BALFOUR						
1948 / 49	RAFTERS 'A'	15TH CROSBY SCOUTS	RAFTERS						
1949 / 50	15TH CROSBY	15TH CROSBY SCOUTS	RAFTERS						
1950 / 51	BALFOUR	RAFTERS	BALFOUR						
1951 / 52	BALFOUR	BALFOUR	RAFTERS						
1952 / 53	BALFOUR	15TH CROSBY SCOUTS	LOFTERS						
1953 / 54	BALFOUR 'A'	15TH CROSBY SCOUTS	BOHEMIANS						
1954 / 55	BALFOUR	BALFOUR	BOHEMIANS						
1955 / 56	BALFOUR	BALFOUR	ANFIELD						
1956 / 57	BALFOUR	RAFTERS	BOHEMIANS						
1957 / 58	BALFOUR	LINNETS	BALFOUR						
1958 / 59	BALFOUR	BALFOUR	BALFOUR						
1959 / 60	LPOOL YMCA	LPOOL YMCA	C.A.D.W.A.						
1960 / 61	RAFTERS	BALFOUR	BOHEMIANS						
1961 / 62	RAFTERS	BOOTLE YMCA	BOHEMIANS						
1962 / 63	LPOOL YMCA	LPOOL YMCA	C.A.D.W.A.						
1963 / 64	LPOOL YMCA	BOHEMIANS	C.A.D.W.A.						
1964 / 65	LPOOL YMCA	LPOOL YMCA	C.A.D.W.A.						
1965 / 66	LPOOL YMCA	BOHEMIANS	RAFTERS						
1966 / 67	LPOOL YMCA	LPOOL YMCA	CRAWFORDS						
1967 / 68	WAV. LABOUR	WAV. LABOUR	CRAWFORDS						
1968 / 69	LPOOL YMCA	LPOOL YMCA	LIVERPOOL YMCA						
1969 / 70	ENGLISH ELECTRIC	ENGLISH ELECTRIC	CRAWFORDS						
1970 / 71	ENGLISH ELECTRIC	ENGLISH ELECTRIC	COLONSAY						
1971 / 72	ENGLISH ELECTRIC	ENGLISH ELECTRIC							
1972 / 73	ENGLISH ELECTRIC	ENGLISH ELECTRIC							
1973 / 74	ENGLISH ELECTRIC	WAV. LABOUR							
1974 / 75	LPOOL YMCA	LPOOL YMCA							
1975 / 76	LPOOL YMCA	LPOOL YMCA							
1976 / 77	LPOOL YMCA	WAV. LABOUR							
1977 / 78	WAV. LABOUR	COLONSAY							
1978 / 79	WAV. LABOUR	WAV. LABOUR							



YEAR	LEAGUE CHAMPIONS	G.B. READMAN CUP WINNERS	WOMENS DIVISION CHAMPIONS	J. RUMBAIN CUP WINNERS	FRANK MURPHY CUP WINNERS	G.B. HYDE CUP WINNERS	J. BARHOLOWAY CUP WINNERS	W. STAMP CUP WINNERS	F.L. FORREST CUP WINNERS
1979 / 80	WAV. LABOUR	WAV. LABOUR		WAV. LABOUR 'B'		BOOTLE		VERNON SANGSTER 'B'	VERNON SANGSTER
1980 / 81	LPOOL YMCA	RAFTERS		BOOTLE		VERNON SANGSTER		KIRKBY	KIRKBY
1981 / 82	RAFTERS	WAV. LABOUR		VERNON SANGSTER		BOOTLE 'A'		UNIVERSITY	KIRKBY
1982 / 83		BOOTLE S.C.				VERNON SANGSTER 'B'		FORDS	BOOTLE J.C.
1983 / 84	WAV. LABOUR	RAFTERS		BATH STREET		BOOTLE S.G. 'A'		POLICE 'B'	FORDS
1984 / 85	BOOTLE	ELECTRIC SUPPLY		MAGHULL 'A'		BATH STREET		M.C.Y.A.	WAV. LABOUR 'D'
1985 / 86	ELECTRIC SUPPLY	BOOTLE S.C.		PLESSEYS		ELECTRIC SUPPLY 'A'		POLICE 'B'	M.C.Y.A.
1986 / 87	ELECTRIC SUPPLY	ELECTRIC SUPPLY		POLICE	WAV. LABOUR	BOOTLE SPORTS CENTRE 'A'			ACTION YOUTH
1987 / 88		FERNHILL		ENGLISH ELECTRIC		ELECTRIC SUPPLY 'A'		BATH ST 'D'	BATH STREET 'D'
1988 / 89	COLONSAY	COLONSAY		BOOTLE J.C.	ELECTRIC SUPPLY	ENGLISH ELECTRIC		BOOTLE J.C. 'B'	RODNEY YOUTH
1989 / 90	ELECTRIC SUPPLY	ELECTRIC SUPPLY		ENGLISH ELECTRIC 'C'	WAV. LABOUR	G.P.T. 'A'		HAROLD HOUSE 'A'	BATH STREET 'C'
1990 / 91	WAV. LABOUR	WAV. LABOUR		ELECTRIC SUPPLY 'A'	ENGLISH ELECTRIC	BATH STREET 'A'		WAV. LABOUR 'D'	BOOTLE YMCA
1991 / 92	WAV. LABOUR	ELECTRIC SUPPLY		ELECTRIC SUPPLY 'A'	LPOOL YMCA	G.P.T. 'B'		UNIVERSITY	BOOTLE J.C. 'B'
1992 / 93	WAV. LABOUR	ELECTRIC SUPPLY		C.A.D.W.A.	WAV. LABOUR	BOOTLE J.C. 'A'		BOOTLE YMCA	ELECTRIC SUPPLY 'B'
1993 / 94	C.A.D.W.A.	COLONSAY		COLONSAY 'A'	WAV. LABOUR	WATERLOO PARK		MANWEB 'C'	LPOOL YMCA
1994 / 95	COLONSAY	COLONSAY		G.P.T.	MANWEB 2	WATERLOO 'B'		WATERLOO PARK 'D'	C.A.D.W.A. 'C'
1995 / 96	COLONSAY	C.A.D.W.A.		WATERLOO PARK	WAV. LABOUR 'B'	WAV. LABOUR 'B'		C.A.D.W.A. 'D'	WAV. LABOUR 'B'
1996 / 97	COLONSAY	C.A.D.W.A.		WATERLOO PARK 'A'	MANWEB 'B'	MANWEB		BATH STREET 'F'	LPOOL YMCA 'B'
1997 / 98	WAV. ST MARYS	WAV. ST MARYS		BATH STREET 'A'	WATERLOO	G.P.T. 'B'		WAV. ST MARYS 'F'	POLICE 'B'
1998 / 99	WAV. ST MARYS	WAV. ST MARYS		C.A.D.W.A. 'A'	WAV. ST MARYS 1	POLICE 'A'		MANWEB 'B'	LPOOL YMCA 'B'
1999 / 00	POLICE	C.A.D.W.A.		POLICE 'A'	C.A.D.W.A. 1	BOOTLE J.C.		LPOOL YMCA 'C'	POLICE 'C'
2000 / 01	POLICE	C.A.D.W.A.		WATERLOO	BOOTLE J.C. 1	POLICE 'B'			WAV. LABOUR 'F'



A. Parris  
20/06/02